

**Anti-Phospho-c-Jun (S73)+JunD (S100) Rabbit Monoclonal Antibody**  
Catalog # ABO16525

**Specification**

---

**Anti-Phospho-c-Jun (S73)+JunD (S100) Rabbit Monoclonal Antibody - Product Information**

Application	WB, IHC, IP
Primary Accession	<a href="#">P05412</a> , <a href="#">P17535</a>
Host	Rabbit
Isotype	IgG
Reactivity	Human, Mouse
Clonality	Monoclonal
Format	Liquid

**Description**

Anti-Phospho-c-Jun (S73)+JunD (S100) Rabbit Monoclonal Antibody . Tested in WB, IHC, IP applications. This antibody reacts with Human, Mouse.

**Anti-Phospho-c-Jun (S73)+JunD (S100) Rabbit Monoclonal Antibody - Additional Information**

**Calculated MW**

38 kDa, 42 kDa, 45 kDa KDa

**Application Details**

WB 1:500-1:2000<br>IHC 1:50-1:200<br>IP 1:50

**Contents**

Rabbit IgG in phosphate buffered saline, pH 7.4, 150mM NaCl, 0.02% sodium azide and 50% glycerol, 0.4-0.5mg/ml BSA.

**Immunogen**

A synthesized peptide derived from human Phospho-c-Jun (S73)+JunD (S100)

**Purification**

Affinity-chromatography

**Storage**

**Store at -20°C for one year. For short term storage and frequent use, store at 4°C for up to one month. Avoid repeated freeze-thaw cycles.**

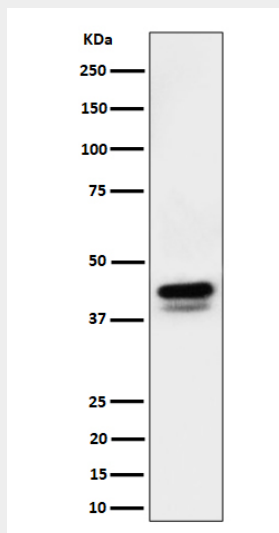
**Anti-Phospho-c-Jun (S73)+JunD (S100) Rabbit Monoclonal Antibody - Protein Information**

**Anti-Phospho-c-Jun (S73)+JunD (S100) Rabbit Monoclonal Antibody - Protocols**

Provided below are standard protocols that you may find useful for product applications.

- [Western Blot](#)
- [Blocking Peptides](#)
- [Dot Blot](#)
- [Immunohistochemistry](#)
- [Immunofluorescence](#)
- [Immunoprecipitation](#)
- [Flow Cytometry](#)
- [Cell Culture](#)

### Anti-Phospho-c-Jun (S73)+JunD (S100) Rabbit Monoclonal Antibody - Images



Western blot analysis of Phospho-c-Jun (S73)+JunD (S100) expression in RAW 264.7 cell lysate.