

**Anti-PPP2R5E Rabbit Monoclonal Antibody**  
Catalog # ABO16522**Specification****Anti-PPP2R5E Rabbit Monoclonal Antibody - Product Information**

Application	WB, IHC, IF, ICC, IP
Primary Accession	<a href="#">Q16537</a>
Host	Rabbit
Isotype	IgG
Reactivity	Human
Clonality	Monoclonal
Format	Liquid

**Description**

Anti-PPP2R5E Rabbit Monoclonal Antibody . Tested in WB, IHC, ICC/IF, IP applications. This antibody reacts with Human.

**Anti-PPP2R5E Rabbit Monoclonal Antibody - Additional Information**

**Gene ID** 5529

**Other Names**

Serine/threonine-protein phosphatase 2A 56 kDa regulatory subunit epsilon isoform, PP2A B subunit isoform B'-epsilon, PP2A B subunit isoform B56-epsilon, PP2A B subunit isoform PR61-epsilon, PP2A B subunit isoform R5-epsilon, PPP2R5E

**Calculated MW**

50 kDa KDa

**Application Details**

WB 1:500-1:2000<br>IHC 1:50-1:200<br>ICC/IF 1:50-1:200<br>IP 1:50

**Contents**

Rabbit IgG in phosphate buffered saline, pH 7.4, 150mM NaCl, 0.02% sodium azide and 50% glycerol, 0.4-0.5mg/ml BSA.

**Immunogen**

A synthesized peptide derived from human PPP2R5E

**Purification**

Affinity-chromatography

**Storage**

**Store at -20°C for one year. For short term storage and frequent use, store at 4°C for up to one month. Avoid repeated freeze-thaw cycles.**

**Anti-PPP2R5E Rabbit Monoclonal Antibody - Protein Information**

**Name** PPP2R5E

**Function**

The B regulatory subunit might modulate substrate selectivity and catalytic activity, and also might direct the localization of the catalytic enzyme to a particular subcellular compartment.

**Cellular Location**

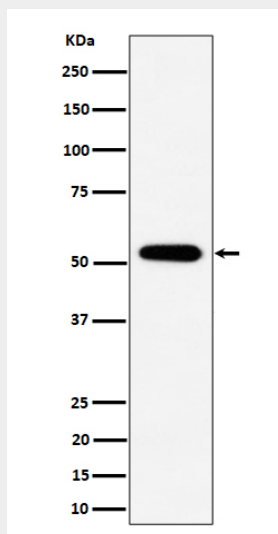
Cytoplasm.

**Anti-PPP2R5E Rabbit Monoclonal Antibody - Protocols**

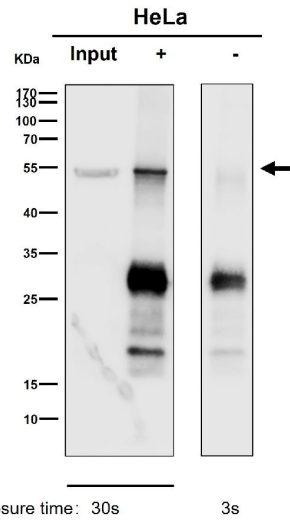
Provided below are standard protocols that you may find useful for product applications.

- [Western Blot](#)
- [Blocking Peptides](#)
- [Dot Blot](#)
- [Immunohistochemistry](#)
- [Immunofluorescence](#)
- [Immunoprecipitation](#)
- [Flow Cytometry](#)
- [Cell Culture](#)

**Anti-PPP2R5E Rabbit Monoclonal Antibody - Images**



Western blot analysis of PPP2R5E expression in 293 cell lysate.



Immunoprecipitate (IP) analysis using the Antibody at 1:50 dilution. (wb at 1:1K dilution)