

**Anti-CRCP Rabbit Monoclonal Antibody**  
Catalog # ABO16521**Specification****Anti-CRCP Rabbit Monoclonal Antibody - Product Information**

Application	WB, IHC, IF, ICC, IP
Primary Accession	<a href="#">O75575</a>
Host	Rabbit
Isotype	IgG
Reactivity	Rat, Human, Mouse
Clonality	Monoclonal
Format	Liquid

**Description**

Anti-CRCP Rabbit Monoclonal Antibody . Tested in WB, IHC, ICC/IF, IP applications. This antibody reacts with Human, Mouse, Rat.

**Anti-CRCP Rabbit Monoclonal Antibody - Additional Information**

**Gene ID** 27297

**Other Names**

DNA-directed RNA polymerase III subunit RPC9, RNA polymerase III subunit C9, Calcitonin gene-related peptide-receptor component protein, CGRP-RCP, CGRP-receptor component protein, CGRPRCP, HsC17, CRCP ([HGNC:17888](http://www.genenames.org/cgi-bin/gene_symbol_report?hgnc_id=17888))

**Calculated MW**

22 kDa KDa

**Application Details**

WB 1:500-1:2000<br>IHC 1:50-1:200<br>ICC/IF 1:50-1:200<br>IP 1:50

**Contents**

Rabbit IgG in phosphate buffered saline, pH 7.4, 150mM NaCl, 0.02% sodium azide and 50% glycerol, 0.4-0.5mg/ml BSA.

**Immunogen**

A synthesized peptide derived from human CRCP

**Purification**

Affinity-chromatography

**Storage**

**Store at -20°C for one year. For short term storage and frequent use, store at 4°C for up to one month. Avoid repeated freeze-thaw cycles.**

**Anti-CRCP Rabbit Monoclonal Antibody - Protein Information**

**Name** CRCP ([HGNC:17888](#))

### Function

DNA-dependent RNA polymerase catalyzes the transcription of DNA into RNA using the four ribonucleoside triphosphates as substrates (PubMed:[20413673](http://www.uniprot.org/citations/20413673), PubMed:[33558764](http://www.uniprot.org/citations/33558764), PubMed:[34675218](http://www.uniprot.org/citations/34675218)). Specific peripheric component of RNA polymerase III (Pol III) which synthesizes small non-coding RNAs including 5S rRNA, snRNAs, tRNAs and miRNAs from at least 500 distinct genomic loci. With POLR3H/RPC8 forms a mobile stalk that protrudes from Pol III core and functions primarily in transcription initiation (By similarity) (PubMed:[20413673](http://www.uniprot.org/citations/20413673), PubMed:[33558764](http://www.uniprot.org/citations/33558764), PubMed:[33558766](http://www.uniprot.org/citations/33558766), PubMed:[34675218](http://www.uniprot.org/citations/34675218)). Pol III plays a key role in sensing and limiting infection by intracellular bacteria and DNA viruses. Acts as nuclear and cytosolic DNA sensor involved in innate immune response. Can sense non-self dsDNA that serves as template for transcription into dsRNA. The non-self RNA polymerase III transcripts, such as Epstein-Barr virus-encoded RNAs (EBERs) induce type I interferon and NF-kappa-B through the RIG-I pathway (PubMed:[19609254](http://www.uniprot.org/citations/19609254), PubMed:[19631370](http://www.uniprot.org/citations/19631370)).

### Cellular Location

Nucleus. Cell membrane {ECO:0000250|UniProtKB:O35427}; Peripheral membrane protein {ECO:0000250|UniProtKB:O35427}; Cytoplasmic side {ECO:0000250|UniProtKB:O35427}

### Tissue Location

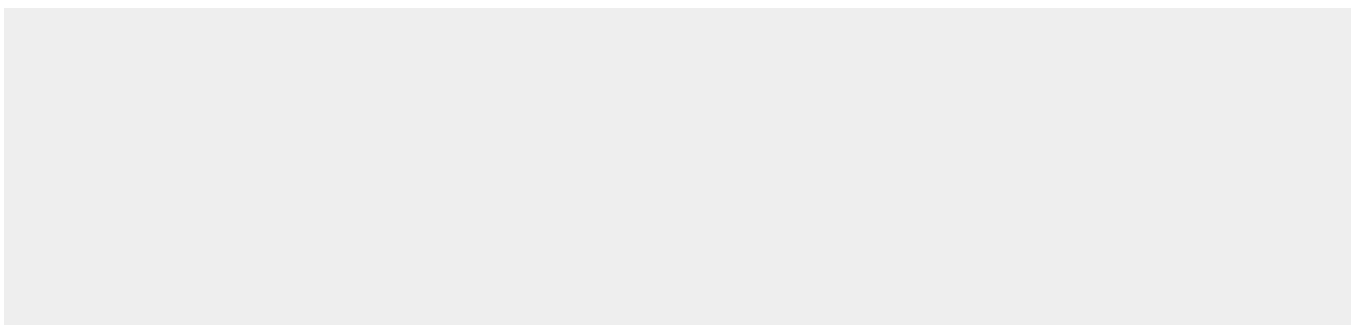
Ubiquitous. Most prevalent in testis.

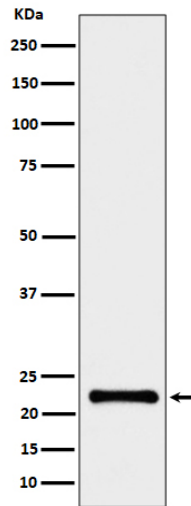
## Anti-CRCP Rabbit Monoclonal Antibody - Protocols

Provided below are standard protocols that you may find useful for product applications.

- [Western Blot](#)
- [Blocking Peptides](#)
- [Dot Blot](#)
- [Immunohistochemistry](#)
- [Immunofluorescence](#)
- [Immunoprecipitation](#)
- [Flow Cytometry](#)
- [Cell Culture](#)

## Anti-CRCP Rabbit Monoclonal Antibody - Images





Western blot analysis of CRCP expression in HeLa cell lysate.