

## Anti-Annexin A7 Rabbit Monoclonal Antibody Catalog # ABO16515

### Specification

---

#### Anti-Annexin A7 Rabbit Monoclonal Antibody - Product Information

Application	WB, IHC, IF, ICC, FC
Primary Accession	<a href="#">P20073</a>
Host	Rabbit
Isotype	IgG
Reactivity	Rat, Human, Mouse
Clonality	Monoclonal
Format	Liquid

#### Description

Anti-Annexin A7 Rabbit Monoclonal Antibody . Tested in WB, IHC, ICC/IF, Flow Cytometry applications. This antibody reacts with Human, Mouse, Rat.

#### Anti-Annexin A7 Rabbit Monoclonal Antibody - Additional Information

**Gene ID** 310

#### Other Names

Annexin A7, Annexin VII, Annexin-7, Synexin, ANXA7, ANX7, SNX

#### Calculated MW

50 kDa KDa

#### Application Details

WB 1:500-1:2000<br>IHC 1:50-1:200<br>ICC/IF 1:50-1:200<br>FC 1:50

#### Contents

Rabbit IgG in phosphate buffered saline, pH 7.4, 150mM NaCl, 0.02% sodium azide and 50% glycerol, 0.4-0.5mg/ml BSA.

#### Immunogen

A synthesized peptide derived from human Annexin A7

#### Purification

Affinity-chromatography

Storage

**Store at -20°C for one year. For short term storage and frequent use, store at 4°C for up to one month. Avoid repeated freeze-thaw cycles.**

#### Anti-Annexin A7 Rabbit Monoclonal Antibody - Protein Information

**Name** ANXA7

## Synonyms ANX7, SNX

### Function

Calcium/phospholipid-binding protein which promotes membrane fusion and is involved in exocytosis.

### Tissue Location

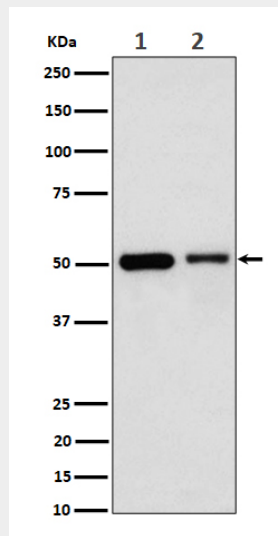
Isoform 1 is expressed in brain, heart and skeletal muscle. Isoform 2 is more abundant in liver, lung, kidney, spleen, fibroblasts and placenta.

## Anti-Annexin A7 Rabbit Monoclonal Antibody - Protocols

Provided below are standard protocols that you may find useful for product applications.

- [Western Blot](#)
- [Blocking Peptides](#)
- [Dot Blot](#)
- [Immunohistochemistry](#)
- [Immunofluorescence](#)
- [Immunoprecipitation](#)
- [Flow Cytometry](#)
- [Cell Culture](#)

## Anti-Annexin A7 Rabbit Monoclonal Antibody - Images



Western blot analysis of Annexin A7 expression in (1) Jurkat cell lysate; (2) Raw264.7 cell lysate.