

## Anti-Phospho-PBK/TOPK (Thr9) Rabbit Monoclonal Antibody Catalog # ABO16497

### Specification

---

#### Anti-Phospho-PBK/TOPK (Thr9) Rabbit Monoclonal Antibody - Product Information

Application	WB, IHC
Primary Accession	<a href="#">Q96KB5</a>
Host	Rabbit
Isotype	IgG
Reactivity	Human
Clonality	Monoclonal
Format	Liquid

#### Description

Anti-Phospho-PBK/TOPK (Thr9) Rabbit Monoclonal Antibody . Tested in WB, IHC applications. This antibody reacts with Human.

#### Anti-Phospho-PBK/TOPK (Thr9) Rabbit Monoclonal Antibody - Additional Information

Gene ID 55872

#### Other Names

Lymphokine-activated killer T-cell-originated protein kinase, 2.7.12.2, Cancer/testis antigen 84, CT84, MAPKK-like protein kinase, Nori-3, PDZ-binding kinase, Spermatogenesis-related protein kinase, SPK, T-LAK cell-originated protein kinase, PBK, TOPK

#### Calculated MW

40 kDa KDa

#### Application Details

WB 1:500-1:2000<br>IHC 1:50-1:200

#### Contents

Rabbit IgG in phosphate buffered saline, pH 7.4, 150mM NaCl, 0.02% sodium azide and 50% glycerol, 0.4-0.5mg/ml BSA.

#### Immunogen

A synthesized peptide derived from human Phospho-PBK/TOPK (Thr9)

#### Purification

Affinity-chromatography

#### Storage

Store at -20°C for one year. For short term storage and frequent use, store at 4°C for up to one month. Avoid repeated freeze-thaw cycles.

#### Anti-Phospho-PBK/TOPK (Thr9) Rabbit Monoclonal Antibody - Protein Information

**Name** PBK

**Synonyms** TOPK

**Function**

Phosphorylates MAP kinase p38. Seems to be active only in mitosis. May also play a role in the activation of lymphoid cells. When phosphorylated, forms a complex with TP53, leading to TP53 destabilization and attenuation of G2/M checkpoint during doxorubicin- induced DNA damage.

**Tissue Location**

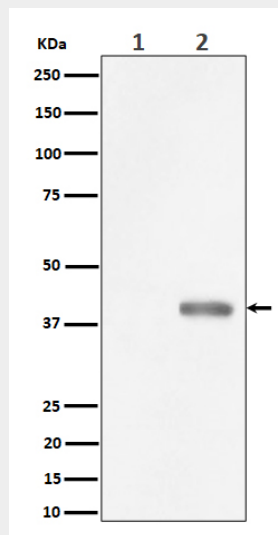
Expressed in the testis and placenta. In the testis, restrictedly expressed in outer cell layer of seminiferous tubules.

**Anti-Phospho-PBK/TOPK (Thr9) Rabbit Monoclonal Antibody - Protocols**

Provided below are standard protocols that you may find useful for product applications.

- [Western Blot](#)
- [Blocking Peptides](#)
- [Dot Blot](#)
- [Immunohistochemistry](#)
- [Immunofluorescence](#)
- [Immunoprecipitation](#)
- [Flow Cytometry](#)
- [Cell Culture](#)

**Anti-Phospho-PBK/TOPK (Thr9) Rabbit Monoclonal Antibody - Images**



Western blot analysis of Phospho-PBK/TOPK (Thr9) expression in (1) HeLa cell lysate; (2) HeLa cell treated with Nocodazole lysate.