

Anti-CFD Rabbit Monoclonal Antibody Catalog # ABO16487

Specification

Anti-CFD Rabbit Monoclonal Antibody - Product Information

Application	WB
Primary Accession	P00746
Host	Rabbit
Isotype	IgG
Reactivity	Human
Clonality	Monoclonal
Format	Liquid

Description

Anti-CFD Rabbit Monoclonal Antibody . Tested in WB application. This antibody reacts with Human.

Anti-CFD Rabbit Monoclonal Antibody - Additional Information

Gene ID 1675

Other Names

Complement factor D, 3.4.21.46, Adipsin, C3 convertase activator, Properdin factor D, CFD, DF, PFD

Calculated MW

25 kDa KDa

Application Details

WB 1:500-1:2000

Contents

Rabbit IgG in phosphate buffered saline, pH 7.4, 150mM NaCl, 0.02% sodium azide and 50% glycerol, 0.4-0.5mg/ml BSA.

Immunogen

A synthesized peptide derived from human CFD

Purification

Affinity-chromatography

Storage

Store at -20°C for one year. For short term storage and frequent use, store at 4°C for up to one month. Avoid repeated freeze-thaw cycles.

Anti-CFD Rabbit Monoclonal Antibody - Protein Information

Name CFD

Synonyms DF, PFD

Function

Factor D cleaves factor B when the latter is complexed with factor C3b, activating the C3bbb complex, which then becomes the C3 convertase of the alternate pathway. Its function is homologous to that of C1s in the classical pathway.

Cellular Location

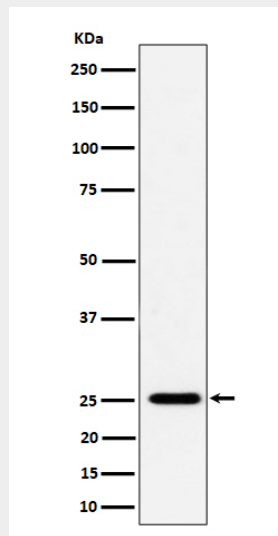
Secreted.

Anti-CFD Rabbit Monoclonal Antibody - Protocols

Provided below are standard protocols that you may find useful for product applications.

- [Western Blot](#)
- [Blocking Peptides](#)
- [Dot Blot](#)
- [Immunohistochemistry](#)
- [Immunofluorescence](#)
- [Immunoprecipitation](#)
- [Flow Cytometry](#)
- [Cell Culture](#)

Anti-CFD Rabbit Monoclonal Antibody - Images



Western blot analysis of CFD expression in THP-1 cell lysate.