

**Anti-PGM1 Rabbit Monoclonal Antibody**  
Catalog # ABO16485**Specification**

---

**Anti-PGM1 Rabbit Monoclonal Antibody - Product Information**

Application	WB, IF, ICC, IP
Primary Accession	<a href="#">P36871</a>
Host	Rabbit
Isotype	IgG
Reactivity	Rat, Human, Mouse
Clonality	Monoclonal
Format	Liquid

**Description**

Anti-PGM1 Rabbit Monoclonal Antibody . Tested in WB, ICC/IF, IP applications. This antibody reacts with Human, Mouse, Rat.

**Anti-PGM1 Rabbit Monoclonal Antibody - Additional Information**

**Gene ID** 5236

**Other Names**

Phosphoglucomutase-1, PGM 1, 5.4.2.2, Glucose phosphomutase 1, PGM1

**Calculated MW**

61 kDa KDa

**Application Details**

WB 1:500-1:2000<br>ICC/IF 1:50-1:200<br>IP 1:50

**Contents**

Rabbit IgG in phosphate buffered saline, pH 7.4, 150mM NaCl, 0.02% sodium azide and 50% glycerol, 0.4-0.5mg/ml BSA.

**Immunogen**

A synthesized peptide derived from human PGM1

**Purification**

Affinity-chromatography

**Storage**

**Store at -20°C for one year. For short term storage and frequent use, store at 4°C for up to one month. Avoid repeated freeze-thaw cycles.**

**Anti-PGM1 Rabbit Monoclonal Antibody - Protein Information**

**Name** PGM1

**Function**

Catalyzes the reversible isomerization of alpha-D-glucose 1- phosphate to alpha-D-glucose 6-phosphate (PubMed:<a href="http://www.uniprot.org/citations/15378030" target="\_blank">15378030</a>, PubMed:<a href="http://www.uniprot.org/citations/25288802" target="\_blank">25288802</a>). The mechanism proceeds via the intermediate compound alpha-D-glucose 1,6-bisphosphate (Probable) (PubMed:<a href="http://www.uniprot.org/citations/25288802" target="\_blank">25288802</a>). This enzyme participates in both the breakdown and synthesis of glucose (PubMed:<a href="http://www.uniprot.org/citations/17924679" target="\_blank">17924679</a>, PubMed:<a href="http://www.uniprot.org/citations/25288802" target="\_blank">25288802</a>).

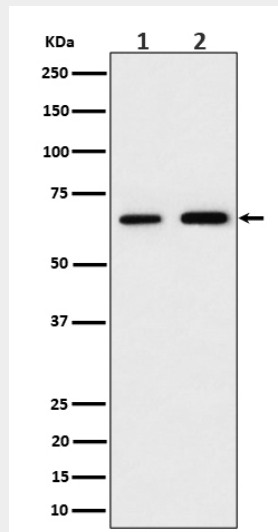
**Cellular Location**

[Isoform 1]: Cytoplasm.

**Anti-PGM1 Rabbit Monoclonal Antibody - Protocols**

Provided below are standard protocols that you may find useful for product applications.

- [Western Blot](#)
- [Blocking Peptides](#)
- [Dot Blot](#)
- [Immunohistochemistry](#)
- [Immunofluorescence](#)
- [Immunoprecipitation](#)

**Anti-PGM1 Rabbit Monoclonal Antibody - Images**

Western blot analysis of PGM1 expression in (1) 293 cell lysate; (2) RAW 264.7 cell lysate.