

## Anti-AZI2 Rabbit Monoclonal Antibody Catalog # ABO16477

### Specification

---

#### Anti-AZI2 Rabbit Monoclonal Antibody - Product Information

Application	WB, IF, ICC
Primary Accession	<a href="#">Q9H6S1</a>
Host	Rabbit
Isotype	IgG
Reactivity	Rat, Human, Mouse
Clonality	Monoclonal
Format	Liquid

#### Description

Anti-AZI2 Rabbit Monoclonal Antibody . Tested in WB, ICC/IF applications. This antibody reacts with Human, Mouse, Rat.

#### Anti-AZI2 Rabbit Monoclonal Antibody - Additional Information

Gene ID 64343

#### Other Names

5-azacytidine-induced protein 2, NF-kappa-B-activating kinase-associated protein 1, Nak-associated protein 1, Nap1, TILP {ECO:0000303|Ref.2}, AZI2, NAP1 {ECO:0000303|PubMed:14560022}, TBKBP2

#### Calculated MW

45 kDa KDa

#### Application Details

WB 1:500-1:2000<br>ICC/IF 1:50-1:200

#### Contents

Rabbit IgG in phosphate buffered saline, pH 7.4, 150mM NaCl, 0.02% sodium azide and 50% glycerol, 0.4-0.5mg/ml BSA.

#### Immunogen

A synthesized peptide derived from human TAF3

#### Purification

Affinity-chromatography

#### Storage

Store at -20°C for one year. For short term storage and frequent use, store at 4°C for up to one month. Avoid repeated freeze-thaw cycles.

#### Anti-AZI2 Rabbit Monoclonal Antibody - Protein Information

**Name** AZI2**Synonyms** NAP1 {ECO:0000303|PubMed:14560022}, TBKB**Function**

Adapter protein which binds TBK1 and IKBKE playing a role in antiviral innate immunity (PubMed:<a href="http://www.uniprot.org/citations/14560022" target="\_blank">14560022</a>, PubMed:<a href="http://www.uniprot.org/citations/21931631" target="\_blank">21931631</a>). Activates serine/threonine-protein kinase TBK1 and facilitates its oligomerization (PubMed:<a href="http://www.uniprot.org/citations/14560022" target="\_blank">14560022</a>, PubMed:<a href="http://www.uniprot.org/citations/21931631" target="\_blank">21931631</a>). Enhances the phosphorylation of NF-kappa-B p65 subunit RELA by TBK1 (PubMed:<a href="http://www.uniprot.org/citations/14560022" target="\_blank">14560022</a>, PubMed:<a href="http://www.uniprot.org/citations/21931631" target="\_blank">21931631</a>). Promotes TBK1-induced as well as TNF-alpha or PMA-induced activation of NF-kappa-B (PubMed:<a href="http://www.uniprot.org/citations/14560022" target="\_blank">14560022</a>, PubMed:<a href="http://www.uniprot.org/citations/21931631" target="\_blank">21931631</a>). Participates in IFNB promoter activation via TICAM1 (PubMed:<a href="http://www.uniprot.org/citations/15611223" target="\_blank">15611223</a>).

**Cellular Location**

Cytoplasm.

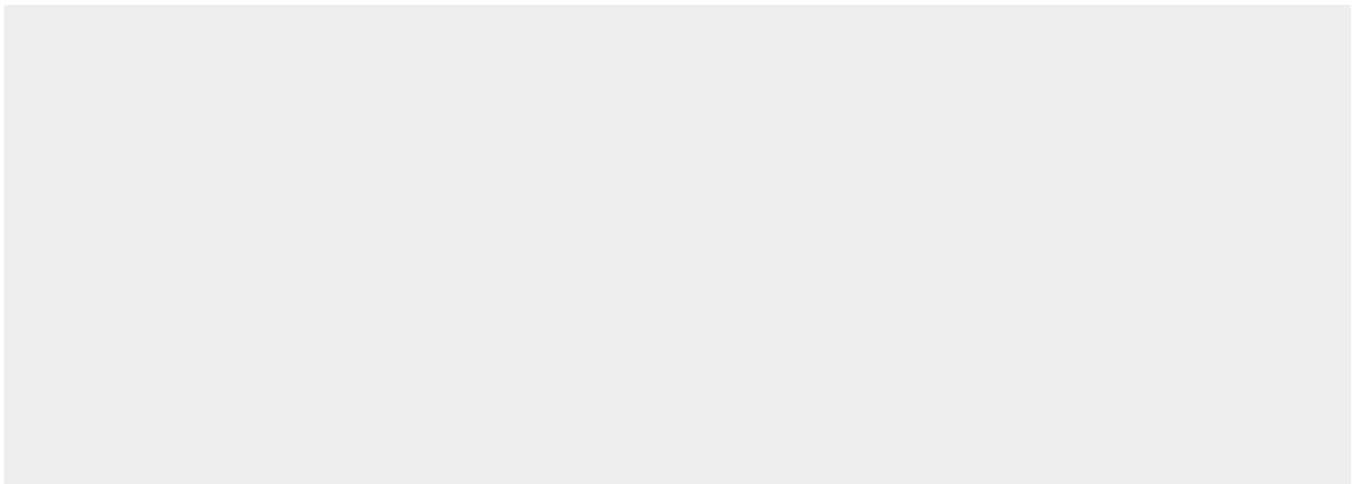
**Tissue Location**

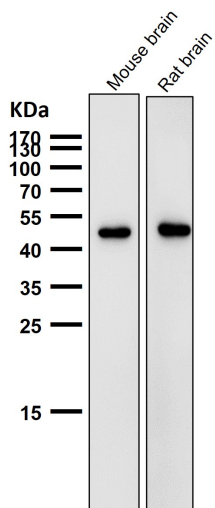
Widely expressed (PubMed:14560022). Abundant expression seen in the pancreas and testis (PubMed:14560022)

**Anti-AZI2 Rabbit Monoclonal Antibody - Protocols**

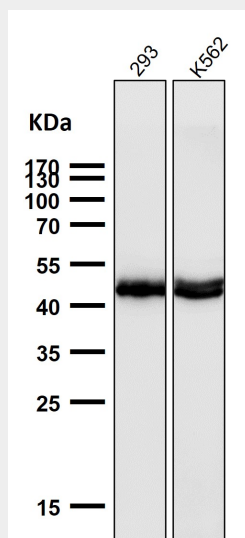
Provided below are standard protocols that you may find useful for product applications.

- [Western Blot](#)
- [Blocking Peptides](#)
- [Dot Blot](#)
- [Immunohistochemistry](#)
- [Immunofluorescence](#)
- [Immunoprecipitation](#)
- [Flow Cytometry](#)
- [Cell Culture](#)

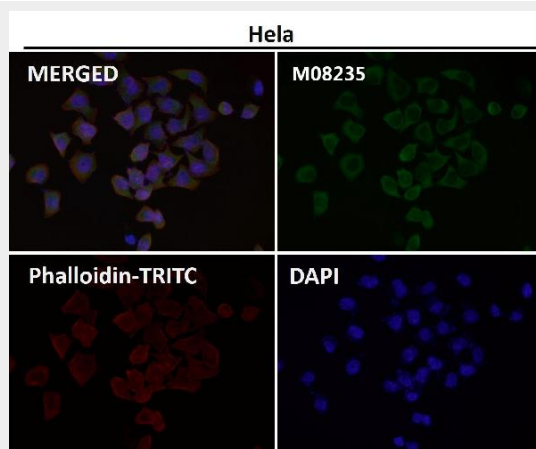
**Anti-AZI2 Rabbit Monoclonal Antibody - Images**



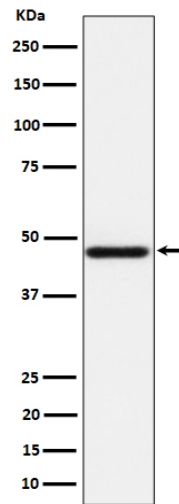
All lanes use the Antibody at 1:1K dilution for 1 hour at room temperature.



All lanes use the Antibody at 1:1K dilution for 1 hour at room temperature.



Immunofluorescent analysis using the Antibody at 1:50 dilution.



Western blot analysis of AZI2 expression in HeLa cell lysate.