

## Anti-SAFB Rabbit Monoclonal Antibody Catalog # ABO16473

### Specification

---

#### Anti-SAFB Rabbit Monoclonal Antibody - Product Information

Application	WB, IHC, IF, ICC
Primary Accession	<a href="#">Q15424</a>
Host	Rabbit
Isotype	IgG
Reactivity	Rat, Human, Mouse
Clonality	Monoclonal
Format	Liquid

#### Description

Anti-SAFB Rabbit Monoclonal Antibody . Tested in WB, IHC, ICC/IF applications. This antibody reacts with Human, Mouse, Rat.

#### Anti-SAFB Rabbit Monoclonal Antibody - Additional Information

Gene ID 6294

#### Other Names

Scaffold attachment factor B1, SAF-B, SAF-B1, HSP27 estrogen response element-TATA box-binding protein, HSP27 ERE-TATA-binding protein, SAFB, HAP, HET, SAFB1

#### Calculated MW

150 kDa KDa

#### Application Details

WB 1:500-1:2000<br>IHC 1:50-1:200<br>ICC/IF 1:50-1:200

#### Contents

Rabbit IgG in phosphate buffered saline, pH 7.4, 150mM NaCl, 0.02% sodium azide and 50% glycerol, 0.4-0.5mg/ml BSA.

#### Immunogen

A synthesized peptide derived from human SAFB

#### Purification

Affinity-chromatography

#### Storage

Store at -20°C for one year. For short term storage and frequent use, store at 4°C for up to one month. Avoid repeated freeze-thaw cycles.

#### Anti-SAFB Rabbit Monoclonal Antibody - Protein Information

Name SAFB

**Synonyms** HAP, HET, SAFB1

### Function

Binds to scaffold/matrix attachment region (S/MAR) DNA and forms a molecular assembly point to allow the formation of a 'transcriptosomal' complex (consisting of SR proteins and RNA polymerase II) coupling transcription and RNA processing (PubMed:<a href="http://www.uniprot.org/citations/9671816" target="\_blank">9671816</a>). Functions as an estrogen receptor corepressor and can also bind to the HSP27 promoter and decrease its transcription (PubMed:<a href="http://www.uniprot.org/citations/12660241" target="\_blank">12660241</a>). Thereby acts as a negative regulator of cell proliferation (PubMed:<a href="http://www.uniprot.org/citations/12660241" target="\_blank">12660241</a>). When associated with RBMX, binds to and stimulates transcription from the SREBF1 promoter (By similarity).

### Cellular Location

Nucleus

### Tissue Location

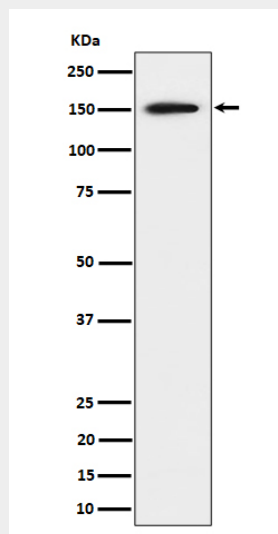
Ubiquitous. Expressed at high levels in the CNS and at low levels in the liver. Expressed in a wide number of breast cancer cell lines

## Anti-SAFB Rabbit Monoclonal Antibody - Protocols

Provided below are standard protocols that you may find useful for product applications.

- [Western Blot](#)
- [Blocking Peptides](#)
- [Dot Blot](#)
- [Immunohistochemistry](#)
- [Immunofluorescence](#)
- [Immunoprecipitation](#)
- [Flow Cytometry](#)
- [Cell Culture](#)

## Anti-SAFB Rabbit Monoclonal Antibody - Images



Western blot analysis of SAFB expression in 293 cell lysate.