

**Anti-MLD Rabbit Monoclonal Antibody**  
Catalog # ABO16467**Specification****Anti-MLD Rabbit Monoclonal Antibody - Product Information**

Application	WB
Primary Accession	<a href="#">O15121</a>
Host	Rabbit
Isotype	IgG
Reactivity	Human
Clonality	Monoclonal
Format	Liquid

**Description**

Anti-MLD Rabbit Monoclonal Antibody . Tested in WB application. This antibody reacts with Human.

**Anti-MLD Rabbit Monoclonal Antibody - Additional Information**

**Gene ID** 8560

**Other Names**

Sphingolipid delta(4)-desaturase DES1, 1.14.19.17, Cell migration-inducing gene 15 protein, Degenerative spermatocyte homolog 1, Dihydroceramide desaturase-1, Membrane lipid desaturase, Retinol isomerase, 5.2.1.-, DEGS1 ([http://www.genenames.org/cgi-bin/gene\\_symbol\\_report?hgnc\\_id=13709](http://www.genenames.org/cgi-bin/gene_symbol_report?hgnc_id=13709))>HGNC:13709</a>), DES1, MLD

**Calculated MW**

34 kDa KDa

**Application Details**

WB 1:500-1:2000

**Contents**

Rabbit IgG in phosphate buffered saline, pH 7.4, 150mM NaCl, 0.02% sodium azide and 50% glycerol, 0.4-0.5mg/ml BSA.

**Immunogen**

A synthesized peptide derived from human MLD

**Purification**

Affinity-chromatography

**Storage**

**Store at -20°C for one year. For short term storage and frequent use, store at 4°C for up to one month. Avoid repeated freeze-thaw cycles.**

**Anti-MLD Rabbit Monoclonal Antibody - Protein Information**

**Name** DEGS1 ([HGNC:13709](#))

**Synonyms** DES1, MLD

**Function**

Has sphingolipid-delta-4-desaturase activity. Converts D- erythro-sphinganine to D-erythro-sphingosine (E-sphing-4-enine) (PubMed:<a href="http://www.uniprot.org/citations/11937514" target="\_blank">11937514</a>, PubMed:<a href="http://www.uniprot.org/citations/30620337" target="\_blank">30620337</a>, PubMed:<a href="http://www.uniprot.org/citations/30620338" target="\_blank">30620338</a>). Catalyzes the equilibrium isomerization of retinols (By similarity).

**Cellular Location**

Mitochondrion membrane. Endoplasmic reticulum membrane; Multi-pass membrane protein

**Tissue Location**

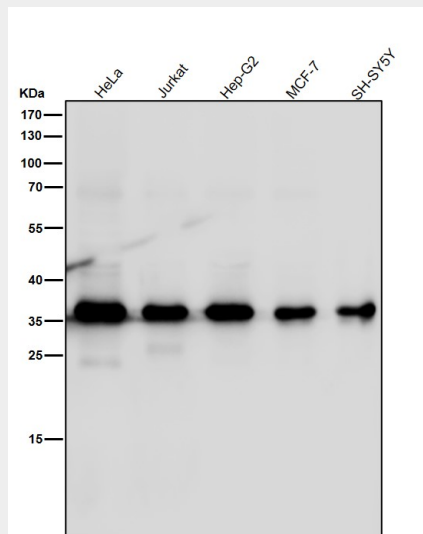
Ubiquitous..

**Anti-MLD Rabbit Monoclonal Antibody - Protocols**

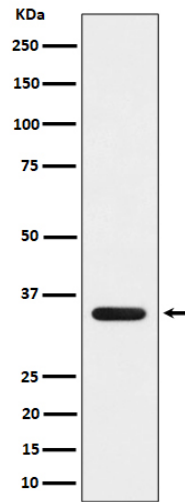
Provided below are standard protocols that you may find useful for product applications.

- [Western Blot](#)
- [Blocking Peptides](#)
- [Dot Blot](#)
- [Immunohistochemistry](#)
- [Immunofluorescence](#)
- [Immunoprecipitation](#)
- [Flow Cytometry](#)
- [Cell Culture](#)

**Anti-MLD Rabbit Monoclonal Antibody - Images**



All lanes use the Antibody at 1:3K dilution for 1 hour at room temperature.



Western blot analysis of MLD expression in 293 cell lysate.