

Anti-CECR5 Rabbit Monoclonal Antibody
Catalog # ABO16455**Specification****Anti-CECR5 Rabbit Monoclonal Antibody - Product Information**

Application	WB, IF, ICC
Primary Accession	Q9BXW7
Host	Rabbit
Isotype	IgG
Reactivity	Human
Clonality	Monoclonal
Format	Liquid

Description

Anti-CECR5 Rabbit Monoclonal Antibody . Tested in WB, ICC/IF applications. This antibody reacts with Human.

Anti-CECR5 Rabbit Monoclonal Antibody - Additional Information

Gene ID 27440

Other Names

Haloacid dehalogenase-like hydrolase domain-containing 5 {ECO:0000312|HGNC:HGNC:1843}, Cat eye syndrome critical region protein 5, HDHD5 ([HGNC:1843](http://www.genenames.org/cgi-bin/gene_symbol_report?hgnc_id=1843))

Calculated MW

46 kDa KDa

Application Details

WB 1:500-1:2000
ICC/IF 1:50-1:200

Contents

Rabbit IgG in phosphate buffered saline, pH 7.4, 150mM NaCl, 0.02% sodium azide and 50% glycerol, 0.4-0.5mg/ml BSA.

Immunogen

A synthesized peptide derived from human CECR5

Purification

Affinity-chromatography

Storage

Store at -20°C for one year. For short term storage and frequent use, store at 4°C for up to one month. Avoid repeated freeze-thaw cycles.

Anti-CECR5 Rabbit Monoclonal Antibody - Protein Information

Name HDHD5 ([HGNC:1843](#))

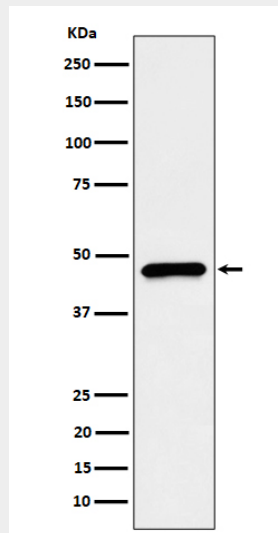
Tissue Location
Widely expressed.

Anti-CECR5 Rabbit Monoclonal Antibody - Protocols

Provided below are standard protocols that you may find useful for product applications.

- [Western Blot](#)
- [Blocking Peptides](#)
- [Dot Blot](#)
- [Immunohistochemistry](#)
- [Immunofluorescence](#)
- [Immunoprecipitation](#)
- [Flow Cytometry](#)
- [Cell Culture](#)

Anti-CECR5 Rabbit Monoclonal Antibody - Images



Western blot analysis of CECR5 expression in HepG2 cell lysate.