

## Anti-MDH2 Rabbit Monoclonal Antibody Catalog # ABO16447

### Specification

---

#### Anti-MDH2 Rabbit Monoclonal Antibody - Product Information

Application	WB, IHC
Primary Accession	<a href="#">P40926</a>
Host	Rabbit
Isotype	IgG
Reactivity	Rat, Human, Mouse
Clonality	Monoclonal
Format	Liquid

#### Description

Anti-MDH2 Rabbit Monoclonal Antibody . Tested in WB, IHC applications. This antibody reacts with Human, Mouse, Rat.

#### Anti-MDH2 Rabbit Monoclonal Antibody - Additional Information

**Gene ID** 4191

#### Other Names

Malate dehydrogenase, mitochondrial, 1.1.1.37, MDH2

#### Calculated MW

36 kDa KDa

#### Application Details

WB 1:500-1:2000<br>IHC 1:50-1:200

#### Contents

Rabbit IgG in phosphate buffered saline, pH 7.4, 150mM NaCl, 0.02% sodium azide and 50% glycerol, 0.4-0.5mg/ml BSA.

#### Immunogen

A synthesized peptide derived from human MDH2

#### Purification

Affinity-chromatography

Storage

**Store at -20°C for one year. For short term storage and frequent use, store at 4°C for up to one month. Avoid repeated freeze-thaw cycles.**

#### Anti-MDH2 Rabbit Monoclonal Antibody - Protein Information

**Name** MDH2

## Cellular Location

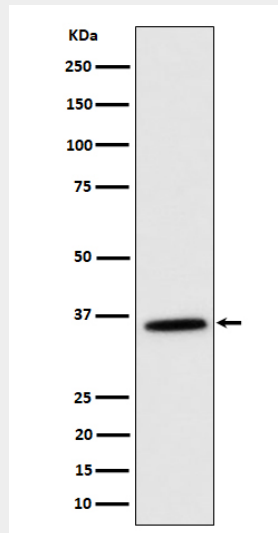
Mitochondrion matrix {ECO:0000250|UniProtKB:P04636}

## Anti-MDH2 Rabbit Monoclonal Antibody - Protocols

Provided below are standard protocols that you may find useful for product applications.

- [Western Blot](#)
- [Blocking Peptides](#)
- [Dot Blot](#)
- [Immunohistochemistry](#)
- [Immunofluorescence](#)
- [Immunoprecipitation](#)
- [Flow Cytometry](#)
- [Cell Culture](#)

## Anti-MDH2 Rabbit Monoclonal Antibody - Images



Western blot analysis of MDH2 expression in K562 cell lysate.