

Anti-GALT Rabbit Monoclonal Antibody
Catalog # ABO16445

Specification

Anti-GALT Rabbit Monoclonal Antibody - Product Information

Application	WB, IF, ICC
Primary Accession	P07902
Host	Rabbit
Isotype	IgG
Reactivity	Rat, Human, Mouse
Clonality	Monoclonal
Format	Liquid

Description

Anti-GALT Rabbit Monoclonal Antibody . Tested in WB, ICC/IF applications. This antibody reacts with Human, Mouse, Rat.

Anti-GALT Rabbit Monoclonal Antibody - Additional Information

Gene ID 2592

Other Names

Galactose-1-phosphate uridylyltransferase, Gal-1-P uridylyltransferase, 2.7.7.12, UDP-glucose--hexose-1-phosphate uridylyltransferase, GALT

Calculated MW

43 kDa KDa

Application Details

WB 1:500-1:2000
ICC/IF 1:50-1:200

Contents

Rabbit IgG in phosphate buffered saline, pH 7.4, 150mM NaCl, 0.02% sodium azide and 50% glycerol, 0.4-0.5mg/ml BSA.

Immunogen

A synthesized peptide derived from human GALT

Purification

Affinity-chromatography

Storage

Store at -20°C for one year. For short term storage and frequent use, store at 4°C for up to one month. Avoid repeated freeze-thaw cycles.

Anti-GALT Rabbit Monoclonal Antibody - Protein Information

Name GALT

Function

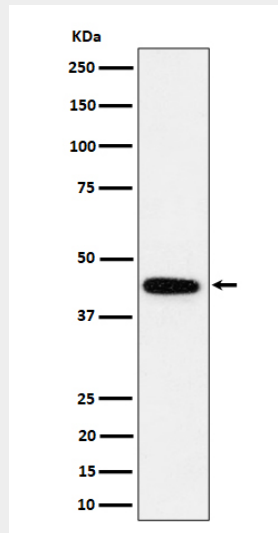
Plays an important role in galactose metabolism.

Anti-GALT Rabbit Monoclonal Antibody - Protocols

Provided below are standard protocols that you may find useful for product applications.

- [Western Blot](#)
- [Blocking Peptides](#)
- [Dot Blot](#)
- [Immunohistochemistry](#)
- [Immunofluorescence](#)
- [Immunoprecipitation](#)
- [Flow Cytometry](#)
- [Cell Culture](#)

Anti-GALT Rabbit Monoclonal Antibody - Images



Western blot analysis of GALT expression in K562 cell lysate.