

Anti-Mras Rabbit Monoclonal Antibody
Catalog # ABO16436

Specification

Anti-Mras Rabbit Monoclonal Antibody - Product Information

Application	WB
Primary Accession	O14807
Host	Rabbit
Isotype	IgG
Reactivity	Rat, Human, Mouse
Clonality	Monoclonal
Format	Liquid

Description

Anti-Mras Rabbit Monoclonal Antibody . Tested in WB application. This antibody reacts with Human, Mouse, Rat.

Anti-Mras Rabbit Monoclonal Antibody - Additional Information

Gene ID 22808

Other Names

Ras-related protein M-Ras, 3.6.5.2, Ras-related protein R-Ras3, MRAS, RRAS3

Calculated MW

24 kDa KDa

Application Details

WB 1:500-1:2000

Contents

Rabbit IgG in phosphate buffered saline, pH 7.4, 150mM NaCl, 0.02% sodium azide and 50% glycerol, 0.4-0.5mg/ml BSA.

Immunogen

A synthesized peptide derived from human Mras

Purification

Affinity-chromatography

Storage

Store at -20°C for one year. For short term storage and frequent use, store at 4°C for up to one month. Avoid repeated freeze-thaw cycles.

Anti-Mras Rabbit Monoclonal Antibody - Protein Information

Name MRAS

Synonyms RRAS3

Function

Serves as an important signal transducer for a novel upstream stimuli in controlling cell proliferation. Activates the MAP kinase pathway.

Cellular Location

Cell membrane; Lipid-anchor; Cytoplasmic side

Tissue Location

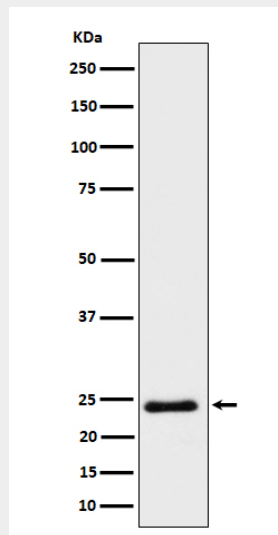
Expression highly restricted to the brain and heart

Anti-Mras Rabbit Monoclonal Antibody - Protocols

Provided below are standard protocols that you may find useful for product applications.

- [Western Blot](#)
- [Blocking Peptides](#)
- [Dot Blot](#)
- [Immunohistochemistry](#)
- [Immunofluorescence](#)
- [Immunoprecipitation](#)
- [Flow Cytometry](#)
- [Cell Culture](#)

Anti-Mras Rabbit Monoclonal Antibody - Images



Western blot analysis of Mras expression in HeLa cell lysate.