

**Anti-TOR4A Rabbit Monoclonal Antibody**  
Catalog # ABO16429

**Specification**

---

**Anti-TOR4A Rabbit Monoclonal Antibody - Product Information**

|                   |                        |
|-------------------|------------------------|
| Application       | WB                     |
| Primary Accession | <a href="#">Q9NXH8</a> |
| Host              | Rabbit                 |
| Isotype           | IgG                    |
| Reactivity        | Human                  |
| Clonality         | Monoclonal             |
| Format            | Liquid                 |

**Description**

Anti-TOR4A Rabbit Monoclonal Antibody . Tested in WB application. This antibody reacts with Human.

**Anti-TOR4A Rabbit Monoclonal Antibody - Additional Information**

**Gene ID** 54863

**Other Names**

Torsin-4A, Torsin family 4 member A, TOR4A, C9orf167

**Calculated MW**

47 kDa KDa

**Application Details**

WB 1:500-1:2000

**Contents**

Rabbit IgG in phosphate buffered saline, pH 7.4, 150mM NaCl, 0.02% sodium azide and 50% glycerol, 0.4-0.5mg/ml BSA.

**Immunogen**

A synthesized peptide derived from human TOR4A

**Purification**

Affinity-chromatography

Storage

**Store at -20°C for one year. For short term storage and frequent use, store at 4°C for up to one month. Avoid repeated freeze-thaw cycles.**

**Anti-TOR4A Rabbit Monoclonal Antibody - Protein Information**

**Name** TOR4A

**Synonyms** C9orf167

**Cellular Location**

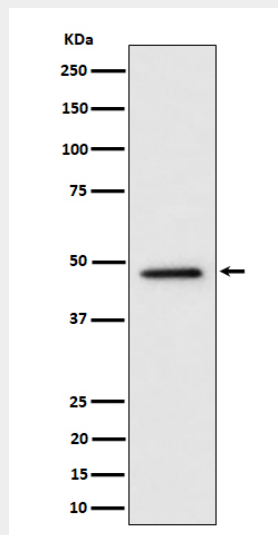
Membrane; Single-pass membrane protein

**Anti-TOR4A Rabbit Monoclonal Antibody - Protocols**

Provided below are standard protocols that you may find useful for product applications.

- [Western Blot](#)
- [Blocking Peptides](#)
- [Dot Blot](#)
- [Immunohistochemistry](#)
- [Immunofluorescence](#)
- [Immunoprecipitation](#)
- [Flow Cytometry](#)
- [Cell Culture](#)

**Anti-TOR4A Rabbit Monoclonal Antibody - Images**



Western blot analysis of TOR4A expression in HeLa cell lysate.