

## Anti-SFT Rabbit Monoclonal Antibody Catalog # ABO16425

### Specification

---

#### Anti-SFT Rabbit Monoclonal Antibody - Product Information

Application	WB, IHC, IP
Primary Accession	<a href="#">P51668</a>
Host	Rabbit
Isotype	IgG
Reactivity	Rat, Human, Mouse
Clonality	Monoclonal
Format	Liquid

#### Description

Anti-SFT Rabbit Monoclonal Antibody . Tested in WB, IHC, IP applications. This antibody reacts with Human, Mouse, Rat.

#### Anti-SFT Rabbit Monoclonal Antibody - Additional Information

Gene ID 7321

#### Other Names

Ubiquitin-conjugating enzyme E2 D1, 2.3.2.23, (E3-independent) E2 ubiquitin-conjugating enzyme D1, 2.3.2.24, E2 ubiquitin-conjugating enzyme D1, Stimulator of Fe transport, SFT, UBC4/5 homolog, Ubch5, Ubiquitin carrier protein D1, Ubiquitin-conjugating enzyme E2(17)KB 1, Ubiquitin-conjugating enzyme E2-17 kDa 1, Ubiquitin-protein ligase D1, UBE2D1, SFT, UBC5A, UBCH5, UBCH5A

#### Calculated MW

17 kDa KDa

#### Application Details

WB 1:500-1:2000<br>IHC 1:50-1:200<br>IP 1:50

#### Contents

Rabbit IgG in phosphate buffered saline, pH 7.4, 150mM NaCl, 0.02% sodium azide and 50% glycerol, 0.4-0.5mg/ml BSA.

#### Immunogen

A synthesized peptide derived from human SFT

#### Purification

Affinity-chromatography

Storage

**Store at -20°C for one year. For short term storage and frequent use, store at 4°C for up to one month. Avoid repeated freeze-thaw cycles.**

#### Anti-SFT Rabbit Monoclonal Antibody - Protein Information

**Name** UBE2D1

**Synonyms** SFT, UBC5A, UBCH5, UBCH5A

**Function**

Accepts ubiquitin from the E1 complex and catalyzes its covalent attachment to other proteins (PubMed:<a href="http://www.uniprot.org/citations/22496338" target="\_blank">22496338</a>). In vitro catalyzes 'Lys-48'-linked polyubiquitination (PubMed:<a href="http://www.uniprot.org/citations/20061386" target="\_blank">20061386</a>). Mediates the selective degradation of short-lived and abnormal proteins. Functions in the E6/E6-AP-induced ubiquitination of p53/TP53. Mediates ubiquitination of PEX5 and auto-ubiquitination of STUB1, TRAF6 and TRIM63/MURF1 (PubMed:<a href="http://www.uniprot.org/citations/18042044" target="\_blank">18042044</a>, PubMed:<a href="http://www.uniprot.org/citations/18359941" target="\_blank">18359941</a>). Ubiquitinates STUB1-associated HSP90AB1 in vitro (PubMed:<a href="http://www.uniprot.org/citations/18042044" target="\_blank">18042044</a>). Lacks inherent specificity for any particular lysine residue of ubiquitin (PubMed:<a href="http://www.uniprot.org/citations/18042044" target="\_blank">18042044</a>). Essential for viral activation of IRF3 (PubMed:<a href="http://www.uniprot.org/citations/19854139" target="\_blank">19854139</a>). Mediates polyubiquitination of CYP3A4 (PubMed:<a href="http://www.uniprot.org/citations/19103148" target="\_blank">19103148</a>).

**Cellular Location**

Cytoplasm.

**Tissue Location**

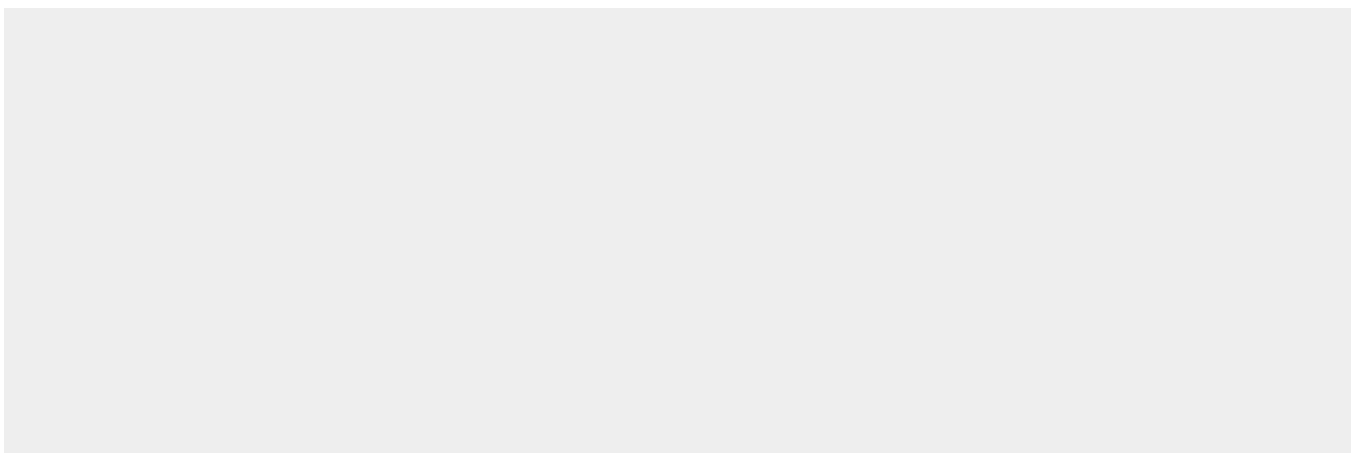
Ubiquitous. Up-regulated in livers of iron- overloaded patients with hereditary hemochromatosis

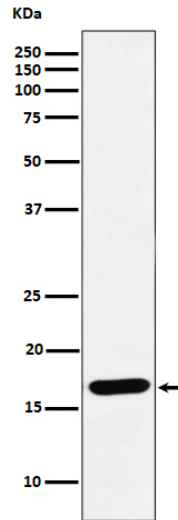
**Anti-SFT Rabbit Monoclonal Antibody - Protocols**

Provided below are standard protocols that you may find useful for product applications.

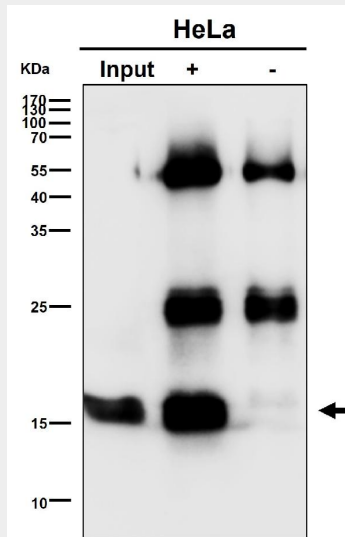
- [Western Blot](#)
- [Blocking Peptides](#)
- [Dot Blot](#)
- [Immunohistochemistry](#)
- [Immunofluorescence](#)
- [Immunoprecipitation](#)
- [Flow Cytometry](#)
- [Cell Culture](#)

**Anti-SFT Rabbit Monoclonal Antibody - Images**





Western blot analysis of SFT expression in Raji cell lysate.



Immunoprecipitate (IP) analysis using the Antibody at 1:50 dilution. (wb at 1:500 dilution)