

Anti-AdSS 2 Rabbit Monoclonal Antibody
Catalog # ABO16421**Specification****Anti-AdSS 2 Rabbit Monoclonal Antibody - Product Information**

Application	WB, IF, ICC, FC
Primary Accession	P30520
Host	Rabbit
Isotype	IgG
Reactivity	Rat, Human, Mouse
Clonality	Monoclonal
Format	Liquid

Description

Anti-AdSS 2 Rabbit Monoclonal Antibody . Tested in WB, ICC/IF, Flow Cytometry applications. This antibody reacts with Human, Mouse, Rat.

Anti-AdSS 2 Rabbit Monoclonal Antibody - Additional Information

Gene ID 159

Other Names

Adenylosuccinate synthetase isozyme 2 {ECO:0000255|HAMAP-Rule:MF_03127}, AMPSase 2 {ECO:0000255|HAMAP-Rule:MF_03127}, AdSS 2 {ECO:0000255|HAMAP-Rule:MF_03127}, 6.3.4.4 {ECO:0000255|HAMAP-Rule:MF_03127}, Adenylosuccinate synthetase, acidic isozyme {ECO:0000255|HAMAP-Rule:MF_03127}, Adenylosuccinate synthetase, liver isozyme {ECO:0000255|HAMAP-Rule:MF_03127}, L-type adenylosuccinate synthetase {ECO:0000255|HAMAP-Rule:MF_03127}, IMP--aspartate ligase 2 {ECO:0000255|HAMAP-Rule:MF_03127}, ADSS2 (http://www.genenames.org/cgi-bin/gene_symbol_report?hgnc_id=292) HGNC:292)

Calculated MW

45 kDa KDa

Application Details

WB 1:500-1:2000
ICC/IF 1:50-1:200
FC 1:50

Contents

Rabbit IgG in phosphate buffered saline, pH 7.4, 150mM NaCl, 0.02% sodium azide and 50% glycerol, 0.4-0.5mg/ml BSA.

Immunogen

A synthesized peptide derived from human AdSS 2

Purification

Affinity-chromatography

Storage

Store at -20°C for one year. For short term storage and frequent use, store at 4°C for

up to one month. Avoid repeated
freeze-thaw cycles.

Anti-AdSS 2 Rabbit Monoclonal Antibody - Protein Information

Name ADSS2 ([HGNC:292](#))

Function

Plays an important role in the de novo pathway and in the salvage pathway of purine nucleotide biosynthesis. Catalyzes the first committed step in the biosynthesis of AMP from IMP.

Cellular Location

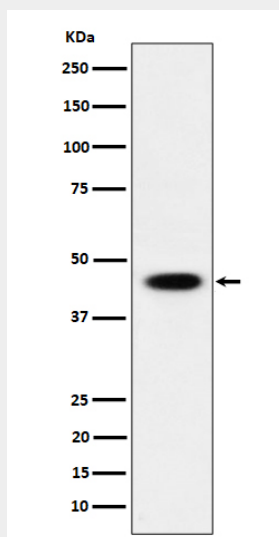
Cytoplasm {ECO:0000255|HAMAP-Rule:MF_03127}. Mitochondrion {ECO:0000250|UniProtKB:A4Z6H1}. Note=Partially associated with particulate fractions

Anti-AdSS 2 Rabbit Monoclonal Antibody - Protocols

Provided below are standard protocols that you may find useful for product applications.

- [Western Blot](#)
- [Blocking Peptides](#)
- [Dot Blot](#)
- [Immunohistochemistry](#)
- [Immunofluorescence](#)
- [Immunoprecipitation](#)
- [Flow Cytometry](#)
- [Cell Culture](#)

Anti-AdSS 2 Rabbit Monoclonal Antibody - Images



Western blot analysis of AdSS 2 expression in 293 cell lysate.