

Anti-RPL10A Rabbit Monoclonal Antibody Catalog # ABO16420

Specification

Anti-RPL10A Rabbit Monoclonal Antibody - Product Information

Application	WB, IHC, IF, ICC, FC
Primary Accession	P62906
Host	Rabbit
Isotype	IgG
Reactivity	Rat, Human, Mouse
Clonality	Monoclonal
Format	Liquid

Description

Anti-RPL10A Rabbit Monoclonal Antibody . Tested in WB, IHC, ICC/IF, Flow Cytometry applications. This antibody reacts with Human, Mouse, Rat.

Anti-RPL10A Rabbit Monoclonal Antibody - Additional Information

Gene ID 4736

Other Names

Large ribosomal subunit protein uL1, 60S ribosomal protein L10a, CSA-19, Neural precursor cell expressed developmentally down-regulated protein 6, NEDD-6, RPL10A, NEDD6

Calculated MW

25 kDa KDa

Application Details

WB 1:500-1:2000
IHC 1:50-1:200
ICC/IF 1:50-1:200
FC 1:50

Contents

Rabbit IgG in phosphate buffered saline, pH 7.4, 150mM NaCl, 0.02% sodium azide and 50% glycerol, 0.4-0.5mg/ml BSA.

Immunogen

A synthesized peptide derived from human RPL10A

Purification

Affinity-chromatography

Storage

Store at -20°C for one year. For short term storage and frequent use, store at 4°C for up to one month. Avoid repeated freeze-thaw cycles.

Anti-RPL10A Rabbit Monoclonal Antibody - Protein Information

Name RPL10A

Synonyms NEDD6

Function

Component of the large ribosomal subunit (PubMed:12962325, PubMed:23636399, PubMed:32669547). The ribosome is a large ribonucleoprotein complex responsible for the synthesis of proteins in the cell (PubMed:12962325, PubMed:23636399, PubMed:32669547).

Cellular Location

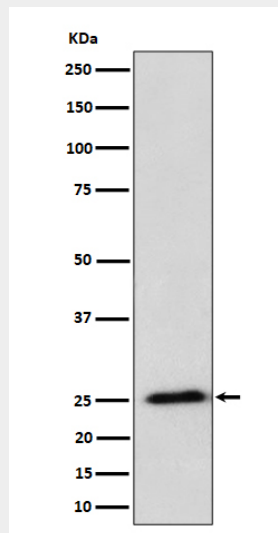
Cytoplasm.

Anti-RPL10A Rabbit Monoclonal Antibody - Protocols

Provided below are standard protocols that you may find useful for product applications.

- [Western Blot](#)
- [Blocking Peptides](#)
- [Dot Blot](#)
- [Immunohistochemistry](#)
- [Immunofluorescence](#)
- [Immunoprecipitation](#)
- [Flow Cytometry](#)
- [Cell Culture](#)

Anti-RPL10A Rabbit Monoclonal Antibody - Images



Western blot analysis of RPL10A expression in HeLa cell lysate.