

**Anti-Integrin beta 3 / CD61 Rabbit Monoclonal Antibody**  
Catalog # ABO16413**Specification****Anti-Integrin beta 3 / CD61 Rabbit Monoclonal Antibody - Product Information**

|                   |                        |
|-------------------|------------------------|
| Application       | WB, IHC, IP            |
| Primary Accession | <a href="#">P05106</a> |
| Host              | Rabbit                 |
| Isotype           | IgG                    |
| Reactivity        | Human                  |
| Clonality         | Monoclonal             |
| Format            | Liquid                 |

**Description**

Anti-Integrin beta 3 / CD61 Rabbit Monoclonal Antibody . Tested in WB, IHC, IP applications. This antibody reacts with Human.

**Anti-Integrin beta 3 / CD61 Rabbit Monoclonal Antibody - Additional Information**

**Gene ID** 3690

**Other Names**

Integrin beta-3, Platelet membrane glycoprotein IIIa, GPIIIa, CD61, ITGB3 ([http://www.genenames.org/cgi-bin/gene\\_symbol\\_report?hgnc\\_id=6156](http://www.genenames.org/cgi-bin/gene_symbol_report?hgnc_id=6156)), GP3A

**Calculated MW**

100 kDa KDa

**Application Details**

WB 1:500-1:2000<br>IHC 1:50-1:200<br>IP 1:50

**Contents**

Rabbit IgG in phosphate buffered saline, pH 7.4, 150mM NaCl, 0.02% sodium azide and 50% glycerol, 0.4-0.5mg/ml BSA.

**Immunogen**

A synthesized peptide derived from human Integrin beta 3 / CD61. EDYPVDILSYSMKDDLWSIQNLGT KLATQMRKLTSLRIGFGAFVDKPVSPYMYISPPEALENPCYDMKTTCLPMFGYKHVLTLDQVTRFNEEVKKQSV SRNRDAPEGGFDAIMQATVCDEKIGWRNDAFTTDAKTHIALDGRLAGIVQPNDGQCHVGSNDNHYSASTTMDYP SLGLMTEKLSQKNINLIFAVTENVVNLVQNYSELIPGTTVGVLSDSSC

**Purification**

Affinity-chromatography

**Storage**

Store at -20°C for one year. For short term storage and frequent use, store at 4°C for up to one month. Avoid repeated freeze-thaw cycles.

## Anti-Integrin beta 3 / CD61 Rabbit Monoclonal Antibody - Protein Information

Name ITGB3 ([HGNC:6156](#))

Synonyms GP3A

### Function

Integrin alpha-V/beta-3 (ITGAV:ITGB3) is a receptor for cytotactin, fibronectin, laminin, matrix metalloproteinase-2, osteopontin, osteomodulin, prothrombin, thrombospondin, vitronectin and von Willebrand factor. Integrin alpha-IIb/beta-3 (ITGA2B:ITGB3) is a receptor for fibronectin, fibrinogen, plasminogen, prothrombin, thrombospondin and vitronectin. Integrins alpha-IIb/beta-3 and alpha-V/beta-3 recognize the sequence R-G-D in a wide array of ligands. Integrin alpha-IIb/beta-3 recognizes the sequence H-H-L-G-G-G-A-K-Q-A- G-D-V in fibrinogen gamma chain. Following activation integrin alpha-IIb/beta-3 brings about platelet/platelet interaction through binding of soluble fibrinogen. This step leads to rapid platelet aggregation which physically plugs ruptured endothelial surface. Fibrinogen binding enhances SELP expression in activated platelets (By similarity). ITGAV:ITGB3 binds to fractalkine (CX3CL1) and acts as its coreceptor in CX3CR1-dependent fractalkine signaling (PubMed:<a href="http://www.uniprot.org/citations/23125415" target="\_blank">23125415</a>, PubMed:<a href="http://www.uniprot.org/citations/24789099" target="\_blank">24789099</a>). ITGAV:ITGB3 binds to NRG1 (via EGF domain) and this binding is essential for NRG1-ERBB signaling (PubMed:<a href="http://www.uniprot.org/citations/20682778" target="\_blank">20682778</a>). ITGAV:ITGB3 binds to FGF1 and this binding is essential for FGF1 signaling (PubMed:<a href="http://www.uniprot.org/citations/18441324" target="\_blank">18441324</a>). ITGAV:ITGB3 binds to FGF2 and this binding is essential for FGF2 signaling (PubMed:<a href="http://www.uniprot.org/citations/28302677" target="\_blank">28302677</a>). ITGAV:ITGB3 binds to IGF1 and this binding is essential for IGF1 signaling (PubMed:<a href="http://www.uniprot.org/citations/19578119" target="\_blank">19578119</a>). ITGAV:ITGB3 binds to IGF2 and this binding is essential for IGF2 signaling (PubMed:<a href="http://www.uniprot.org/citations/28873464" target="\_blank">28873464</a>). ITGAV:ITGB3 binds to IL1B and this binding is essential for IL1B signaling (PubMed:<a href="http://www.uniprot.org/citations/29030430" target="\_blank">29030430</a>). ITGAV:ITGB3 binds to PLA2G2A via a site (site 2) which is distinct from the classical ligand-binding site (site 1) and this induces integrin conformational changes and enhanced ligand binding to site 1 (PubMed:<a href="http://www.uniprot.org/citations/18635536" target="\_blank">18635536</a>, PubMed:<a href="http://www.uniprot.org/citations/25398877" target="\_blank">25398877</a>). ITGAV:ITGB3 acts as a receptor for fibrillin-1 (FBN1) and mediates R-G-D-dependent cell adhesion to FBN1 (PubMed:<a href="http://www.uniprot.org/citations/12807887" target="\_blank">12807887</a>). In brain, plays a role in synaptic transmission and plasticity. Involved in the regulation of the serotonin neurotransmission, is required to localize to specific compartments within the synapse the serotonin receptor SLC6A4 and for an appropriate reuptake of serotonin. Controls excitatory synaptic strength by regulating GRIA2-containing AMPAR endocytosis, which affects AMPAR abundance and composition (By similarity). ITGAV:ITGB3 act as a receptor for CD40LG (PubMed:<a href="http://www.uniprot.org/citations/31331973" target="\_blank">31331973</a>). ITGAV:ITGB3 acts as a receptor for IBSP and promotes cell adhesion and migration to IBSP (PubMed:<a href="http://www.uniprot.org/citations/10640428" target="\_blank">10640428</a>).

### Cellular Location

Cell membrane; Single-pass type I membrane protein. Cell projection, lamellipodium membrane. Cell junction, focal adhesion. Postsynaptic cell membrane {ECO:0000250|UniProtKB:O54890}; Single-pass type I membrane protein {ECO:0000250|UniProtKB:O54890}. Synapse {ECO:0000250|UniProtKB:O54890}

### Tissue Location

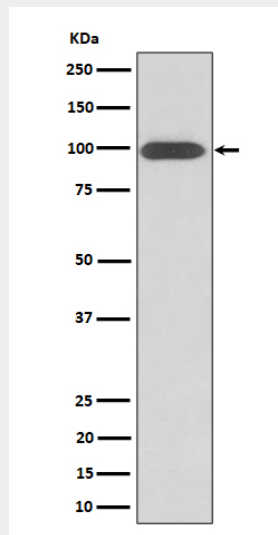
Isoform beta-3A and isoform beta-3C are widely expressed. Isoform beta-3A is specifically expressed in osteoblast cells; isoform beta-3C is specifically expressed in prostate and testis

## Anti-Integrin beta 3 / CD61 Rabbit Monoclonal Antibody - Protocols

Provided below are standard protocols that you may find useful for product applications.

- [Western Blot](#)
- [Blocking Peptides](#)
- [Dot Blot](#)
- [Immunohistochemistry](#)
- [Immunofluorescence](#)
- [Immunoprecipitation](#)
- [Flow Cytometry](#)
- [Cell Culture](#)

## Anti-Integrin beta 3 / CD61 Rabbit Monoclonal Antibody - Images



Western blot analysis of Integrin beta 3 / CD61 expression in U-87 MG cell lysate.