

Anti-CEP43 Rabbit Monoclonal Antibody
Catalog # ABO16403**Specification****Anti-CEP43 Rabbit Monoclonal Antibody - Product Information**

Application	WB, IF, ICC
Primary Accession	O95684
Host	Rabbit
Isotype	IgG
Reactivity	Rat, Human, Mouse
Clonality	Monoclonal
Format	Liquid

Description

Anti-CEP43 Rabbit Monoclonal Antibody . Tested in WB, ICC/IF applications. This antibody reacts with Human, Mouse, Rat.

Anti-CEP43 Rabbit Monoclonal Antibody - Additional Information

Gene ID 11116

Other Names

Centrosomal protein 43, FGFR1 oncogene partner, CEP43 (http://www.genenames.org/cgi-bin/gene_symbol_report?hgnc_id=17012), FGFR1OP, FOP

Calculated MW

50 kDa KDa

Application Details

WB 1:500-1:2000
ICC/IF 1:50-1:200

Contents

Rabbit IgG in phosphate buffered saline, pH 7.4, 150mM NaCl, 0.02% sodium azide and 50% glycerol, 0.4-0.5mg/ml BSA.

Immunogen

A synthesized peptide derived from human CEP43

Purification

Affinity-chromatography

Storage

Store at -20°C for one year. For short term storage and frequent use, store at 4°C for up to one month. Avoid repeated freeze-thaw cycles.

Anti-CEP43 Rabbit Monoclonal Antibody - Protein Information

Name CEP43 ([HGNC:17012](#))

Synonyms FGFR1OP, FOP

Function

Required for anchoring microtubules to the centrosomes (PubMed:[16314388](http://www.uniprot.org/citations/16314388), PubMed:[28659385](http://www.uniprot.org/citations/28659385)). Required for ciliation (PubMed:[28625565](http://www.uniprot.org/citations/28625565), PubMed:[28659385](http://www.uniprot.org/citations/28659385)).

Cellular Location

Cytoplasm, cytoskeleton, microtubule organizing center, centrosome. Cytoplasm, cytoskeleton, microtubule organizing center, centrosome, centriole. Cytoplasm, cytoskeleton, cilium basal body Note=Associated with gamma-tubulin (PubMed:16314388). Localizes on both mother and daughter centrioles (PubMed:28428259, PubMed:28625565) Localizes to an axial position on the mother centriole (PubMed:28625565). Localizes to the distal end of the centriole partly on the subdistal appendage region (PubMed:28659385)

Tissue Location

Ubiquitous. Highly expressed in heart, liver, muscle, kidney, intestine, colon, adrenal gland, prostate, testis, and pancreas.

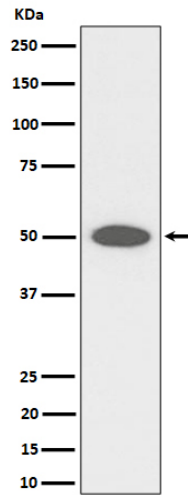
Anti-CEP43 Rabbit Monoclonal Antibody - Protocols

Provided below are standard protocols that you may find useful for product applications.

- [Western Blot](#)
- [Blocking Peptides](#)
- [Dot Blot](#)
- [Immunohistochemistry](#)
- [Immunofluorescence](#)
- [Immunoprecipitation](#)
- [Flow Cytometry](#)
- [Cell Culture](#)

Anti-CEP43 Rabbit Monoclonal Antibody - Images





Western blot analysis of CEP43 expression in HeLa cell lysate.