

**Anti-Phospho-Nucleolin (T76) Rabbit Monoclonal Antibody**  
Catalog # ABO16396**Specification**

---

**Anti-Phospho-Nucleolin (T76) Rabbit Monoclonal Antibody - Product Information**

|                   |                        |
|-------------------|------------------------|
| Application       | WB, IHC                |
| Primary Accession | <a href="#">P19338</a> |
| Host              | Rabbit                 |
| Isotype           | IgG                    |
| Reactivity        | Human                  |
| Clonality         | Monoclonal             |
| Format            | Liquid                 |

**Description**

Anti-Phospho-Nucleolin (T76) Rabbit Monoclonal Antibody . Tested in WB, IHC applications. This antibody reacts with Human.

**Anti-Phospho-Nucleolin (T76) Rabbit Monoclonal Antibody - Additional Information**

**Gene ID** 4691

**Other Names**

Nucleolin, Protein C23, NCL

**Calculated MW**

100-110 kDa KDa

**Application Details**

WB 1:500-1:2000<br>IHC 1:50-1:200

**Contents**

Rabbit IgG in phosphate buffered saline, pH 7.4, 150mM NaCl, 0.02% sodium azide and 50% glycerol, 0.4-0.5mg/ml BSA.

**Immunogen**

A synthesized peptide derived from human Phospho-Nucleolin (T76)

**Purification**

Affinity-chromatography

Storage

**Store at -20°C for one year. For short term storage and frequent use, store at 4°C for up to one month. Avoid repeated freeze-thaw cycles.**

**Anti-Phospho-Nucleolin (T76) Rabbit Monoclonal Antibody - Protein Information**

**Name** NCL

### Function

Nucleolin is the major nucleolar protein of growing eukaryotic cells. It is found associated with intranucleolar chromatin and pre-ribosomal particles. It induces chromatin decondensation by binding to histone H1. It is thought to play a role in pre-rRNA transcription and ribosome assembly. May play a role in the process of transcriptional elongation. Binds RNA oligonucleotides with 5'-UUAGGG- 3' repeats more tightly than the telomeric single-stranded DNA 5'- TTAGGG-3' repeats.

### Cellular Location

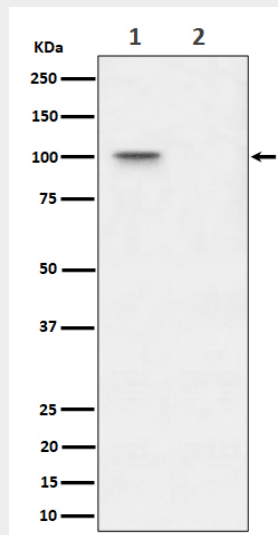
Nucleus, nucleolus. Cytoplasm. Note=Localized in cytoplasmic mRNP granules containing untranslated mRNAs

### Anti-Phospho-Nucleolin (T76) Rabbit Monoclonal Antibody - Protocols

Provided below are standard protocols that you may find useful for product applications.

- [Western Blot](#)
- [Blocking Peptides](#)
- [Dot Blot](#)
- [Immunohistochemistry](#)
- [Immunofluorescence](#)
- [Immunoprecipitation](#)
- [Flow Cytometry](#)
- [Cell Culture](#)

### Anti-Phospho-Nucleolin (T76) Rabbit Monoclonal Antibody - Images



Western blot analysis of Phospho-Nucleolin (T76) expression in (1) 293T cell lysate; (2) 293T cell treated with Lambda Phosphatase lysate.