

## Anti-SF3A3 Rabbit Monoclonal Antibody Catalog # ABO16393

### Specification

---

#### Anti-SF3A3 Rabbit Monoclonal Antibody - Product Information

Application	WB, IHC, IF, ICC
Primary Accession	<a href="#">Q12874</a>
Host	Rabbit
Isotype	IgG
Reactivity	Rat, Human, Mouse
Clonality	Monoclonal
Format	Liquid

#### Description

Anti-SF3A3 Rabbit Monoclonal Antibody . Tested in WB, IHC, ICC/IF applications. This antibody reacts with Human, Mouse, Rat.

#### Anti-SF3A3 Rabbit Monoclonal Antibody - Additional Information

**Gene ID** 10946

#### Other Names

Splicing factor 3A subunit 3, SF3a60, Spliceosome-associated protein 61, SAP 61, SF3A3, SAP61

#### Calculated MW

59 kDa KDa

#### Application Details

WB 1:500-1:2000<br>IHC 1:50-1:200<br>ICC/IF 1:50-1:200

#### Contents

Rabbit IgG in phosphate buffered saline, pH 7.4, 150mM NaCl, 0.02% sodium azide and 50% glycerol, 0.4-0.5mg/ml BSA.

#### Immunogen

A synthesized peptide derived from human SF3A3

#### Purification

Affinity-chromatography

Storage

**Store at -20°C for one year. For short term storage and frequent use, store at 4°C for up to one month. Avoid repeated freeze-thaw cycles.**

#### Anti-SF3A3 Rabbit Monoclonal Antibody - Protein Information

**Name** SF3A3

## Synonyms SAP61

### Function

Component of the 17S U2 SnRNP complex of the spliceosome, a large ribonucleoprotein complex that removes introns from transcribed pre-mRNAs (PubMed:<a href="http://www.uniprot.org/citations/10882114" target="\_blank">10882114</a>, PubMed:<a href="http://www.uniprot.org/citations/11533230" target="\_blank">11533230</a>, PubMed:<a href="http://www.uniprot.org/citations/32494006" target="\_blank">32494006</a>, PubMed:<a href="http://www.uniprot.org/citations/34822310" target="\_blank">34822310</a>, PubMed:<a href="http://www.uniprot.org/citations/8022796" target="\_blank">8022796</a>). The 17S U2 SnRNP complex (1) directly participates in early spliceosome assembly and (2) mediates recognition of the intron branch site during pre-mRNA splicing by promoting the selection of the pre-mRNA branch-site adenosine, the nucleophile for the first step of splicing (PubMed:<a href="http://www.uniprot.org/citations/10882114" target="\_blank">10882114</a>, PubMed:<a href="http://www.uniprot.org/citations/11533230" target="\_blank">11533230</a>, PubMed:<a href="http://www.uniprot.org/citations/32494006" target="\_blank">32494006</a>, PubMed:<a href="http://www.uniprot.org/citations/34822310" target="\_blank">34822310</a>). Within the 17S U2 SnRNP complex, SF3A3 is part of the SF3A subcomplex that contributes to the assembly of the 17S U2 snRNP, and the subsequent assembly of the pre-spliceosome 'E' complex and the pre-catalytic spliceosome 'A' complex (PubMed:<a href="http://www.uniprot.org/citations/10882114" target="\_blank">10882114</a>, PubMed:<a href="http://www.uniprot.org/citations/11533230" target="\_blank">11533230</a>). Involved in pre-mRNA splicing as a component of pre-catalytic spliceosome 'B' complexes (PubMed:<a href="http://www.uniprot.org/citations/29360106" target="\_blank">29360106</a>, PubMed:<a href="http://www.uniprot.org/citations/30315277" target="\_blank">30315277</a>).

### Cellular Location

Nucleus speckle. Nucleus

### Tissue Location

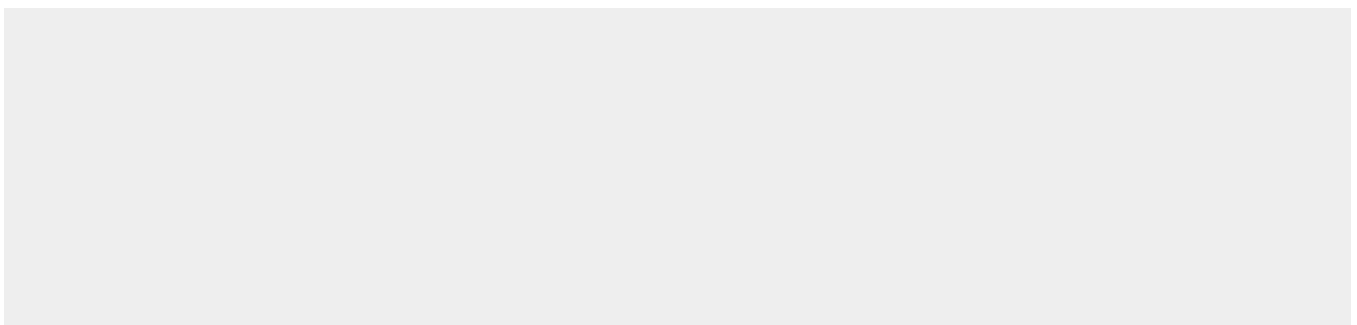
Ubiquitous..

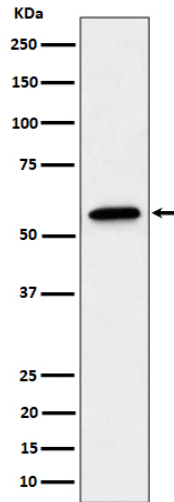
## Anti-SF3A3 Rabbit Monoclonal Antibody - Protocols

Provided below are standard protocols that you may find useful for product applications.

- [Western Blot](#)
- [Blocking Peptides](#)
- [Dot Blot](#)
- [Immunohistochemistry](#)
- [Immunofluorescence](#)
- [Immunoprecipitation](#)
- [Flow Cytometry](#)
- [Cell Culture](#)

## Anti-SF3A3 Rabbit Monoclonal Antibody - Images





Western blot analysis of SF3A3 expression in A431 cell lysate.