

Anti-EPHX2 Rabbit Monoclonal Antibody
Catalog # ABO16385**Specification****Anti-EPHX2 Rabbit Monoclonal Antibody - Product Information**

Application	WB
Primary Accession	P34913
Host	Rabbit
Isotype	IgG
Reactivity	Human
Clonality	Monoclonal
Format	Liquid

Description

Anti-EPHX2 Rabbit Monoclonal Antibody . Tested in WB application. This antibody reacts with Human.

Anti-EPHX2 Rabbit Monoclonal Antibody - Additional Information

Gene ID 2053

Other Names

Bifunctional epoxide hydrolase 2, Cytosolic epoxide hydrolase 2, CEH, 3.3.2.10, Epoxide hydratase, Soluble epoxide hydrolase, SEH, Lipid-phosphate phosphatase, 3.1.3.76, EPHX2 (http://www.genenames.org/cgi-bin/gene_symbol_report?hgnc_id=3402)
target="_blank">HGNC:3402)

Calculated MW

70 kDa KDa

Application Details

WB 1:500-1:2000

Contents

Rabbit IgG in phosphate buffered saline, pH 7.4, 150mM NaCl, 0.02% sodium azide and 50% glycerol, 0.4-0.5mg/ml BSA.

Immunogen

A synthesized peptide derived from human EPHX2

Purification

Affinity-chromatography

Storage

Store at -20°C for one year. For short term storage and frequent use, store at 4°C for up to one month. Avoid repeated freeze-thaw cycles.

Anti-EPHX2 Rabbit Monoclonal Antibody - Protein Information

Name EPHX2 ([HGNC:3402](#))**Function**

Bifunctional enzyme (PubMed:12574510). The C-terminal domain has epoxide hydrolase activity and acts on epoxides (alkene oxides, oxiranes) and arene oxides (PubMed:12574510, PubMed:12869654, PubMed:22798687). Plays a role in xenobiotic metabolism by degrading potentially toxic epoxides (By similarity). Also determines steady- state levels of physiological mediators (PubMed:12574510, PubMed:12869654, PubMed:21217101, PubMed:22798687).

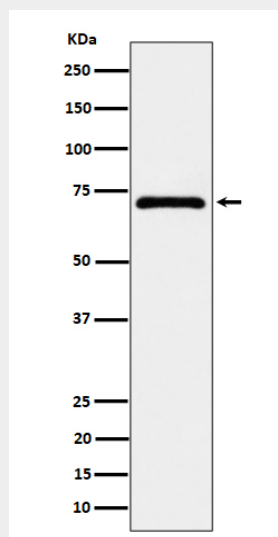
Cellular Location

Cytoplasm. Peroxisome.

Anti-EPHX2 Rabbit Monoclonal Antibody - Protocols

Provided below are standard protocols that you may find useful for product applications.

- [Western Blot](#)
- [Blocking Peptides](#)
- [Dot Blot](#)
- [Immunohistochemistry](#)
- [Immunofluorescence](#)
- [Immunoprecipitation](#)
- [Flow Cytometry](#)
- [Cell Culture](#)

Anti-EPHX2 Rabbit Monoclonal Antibody - Images

Western blot analysis of EPHX2 expression in MCF7 cell lysate.