

## Anti-NUP50 Rabbit Monoclonal Antibody Catalog # ABO16384

### Specification

---

#### Anti-NUP50 Rabbit Monoclonal Antibody - Product Information

Application	WB, IHC, IF, ICC
Primary Accession	<a href="#">Q9UKX7</a>
Host	Rabbit
Isotype	IgG
Reactivity	Rat, Human, Mouse
Clonality	Monoclonal
Format	Liquid

#### Description

Anti-NUP50 Rabbit Monoclonal Antibody . Tested in WB, IHC, ICC/IF applications. This antibody reacts with Human, Mouse, Rat.

#### Anti-NUP50 Rabbit Monoclonal Antibody - Additional Information

**Gene ID** 10762

#### Other Names

Nuclear pore complex protein Nup50, 50 kDa nucleoporin, Nuclear pore-associated protein 60 kDa-like, Nucleoporin Nup50, NUP50, NPAP60L

#### Calculated MW

55 kDa KDa

#### Application Details

WB 1:500-1:2000<br>IHC 1:50-1:200<br>ICC/IF 1:50-1:200

#### Contents

Rabbit IgG in phosphate buffered saline, pH 7.4, 150mM NaCl, 0.02% sodium azide and 50% glycerol, 0.4-0.5mg/ml BSA.

#### Immunogen

A synthesized peptide derived from human NUP50

#### Purification

Affinity-chromatography

#### Storage

**Store at -20°C for one year. For short term storage and frequent use, store at 4°C for up to one month. Avoid repeated freeze-thaw cycles.**

#### Anti-NUP50 Rabbit Monoclonal Antibody - Protein Information

**Name** NUP50

## Synonyms NPAP60L

### Function

Component of the nuclear pore complex that has a direct role in nuclear protein import (PubMed:<a href="http://www.uniprot.org/citations/20016008" target="\_blank">20016008</a>). Actively displaces NLSs from importin-alpha, and facilitates disassembly of the importin-alpha:beta-cargo complex and importin recycling (PubMed:<a href="http://www.uniprot.org/citations/20016008" target="\_blank">20016008</a>). Interacts with regulatory proteins of cell cycle progression including CDKN1B (By similarity). This interaction is required for correct intracellular transport and degradation of CDKN1B (By similarity).

### Cellular Location

Nucleus, nuclear pore complex. Nucleus membrane {ECO:0000250|UniProtKB:O08587}; Peripheral membrane protein {ECO:0000250|UniProtKB:O08587}; Nucleoplasmic side {ECO:0000250|UniProtKB:O08587}. Note=Localizes to the nucleoplasmic fibrils of the nuclear pore complex (By similarity). Dissociates from the NPC structure early during prophase of mitosis (PubMed:12802065) Associates with the newly formed nuclear membrane during telophase (PubMed:12802065). In the testis, the localization changes during germ cell differentiation from the nuclear surface in spermatocytes to the whole nucleus (interior) in spermatids and back to the nuclear surface in spermatozoa (By similarity). {ECO:0000250|UniProtKB:O08587, ECO:0000269|PubMed:12802065}

### Tissue Location

Ubiquitous. Highest levels in testis, peripheral blood leukocytes and fetal liver

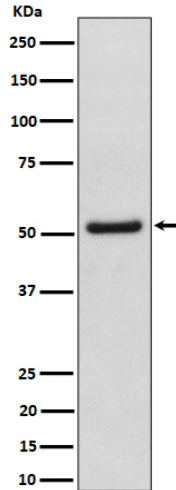
## Anti-NUP50 Rabbit Monoclonal Antibody - Protocols

Provided below are standard protocols that you may find useful for product applications.

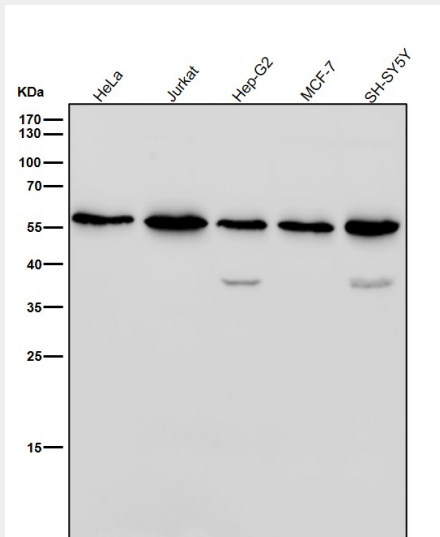
- [Western Blot](#)
- [Blocking Peptides](#)
- [Dot Blot](#)
- [Immunohistochemistry](#)
- [Immunofluorescence](#)
- [Immunoprecipitation](#)
- [Flow Cytometry](#)
- [Cell Culture](#)

## Anti-NUP50 Rabbit Monoclonal Antibody - Images

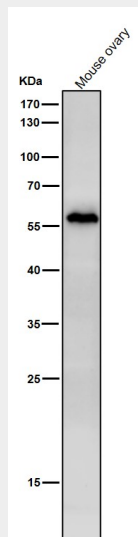




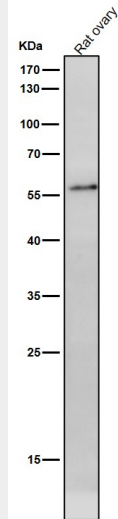
Western blot analysis of NUP50 expression in HeLa cell lysate.



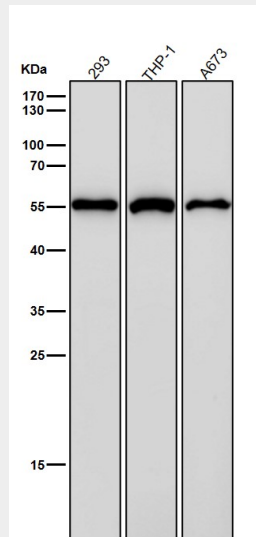
All lanes use the Antibody at 1:1K dilution for 1 hour at room temperature.



All lanes use the Antibody at 1:1K dilution for 1 hour at room temperature.



All lanes use the Antibody at 1:1K dilution for 1 hour at room temperature.



All lanes use the Antibody at 1:1K dilution for 1 hour at room temperature.