

**Anti-Phospho-eIF4B (S406) Rabbit Monoclonal Antibody**  
**Catalog # ABO16368****Specification**

---

**Anti-Phospho-eIF4B (S406) Rabbit Monoclonal Antibody - Product Information**

Application	WB, IHC
Primary Accession	<a href="#">P23588</a>
Host	Rabbit
Isotype	IgG
Reactivity	Rat, Human, Mouse
Clonality	Monoclonal
Format	Liquid

**Description**

Anti-Phospho-eIF4B (S406) Rabbit Monoclonal Antibody . Tested in WB, IHC applications. This antibody reacts with Human, Mouse, Rat.

**Anti-Phospho-eIF4B (S406) Rabbit Monoclonal Antibody - Additional Information**

**Gene ID** 1975

**Other Names**

Eukaryotic translation initiation factor 4B, eIF-4B, EIF4B

**Calculated MW**

80 kDa KDa

**Application Details**

WB 1:500-1:2000<br>IHC 1:50-1:200

**Contents**

Rabbit IgG in phosphate buffered saline, pH 7.4, 150mM NaCl, 0.02% sodium azide and 50% glycerol, 0.4-0.5mg/ml BSA.

**Immunogen**

A synthesized peptide derived from human Phospho-eIF4B (S406)

**Purification**

Affinity-chromatography

**Storage**

**Store at -20°C for one year. For short term storage and frequent use, store at 4°C for up to one month. Avoid repeated freeze-thaw cycles.**

**Anti-Phospho-eIF4B (S406) Rabbit Monoclonal Antibody - Protein Information**

**Name** EIF4B

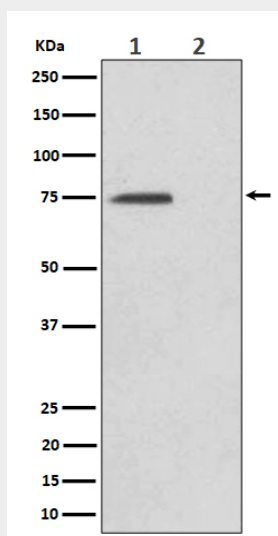
**Function**

Required for the binding of mRNA to ribosomes. Functions in close association with EIF4-F and EIF4-A. Binds near the 5'-terminal cap of mRNA in presence of EIF-4F and ATP. Promotes the ATPase activity and the ATP-dependent RNA unwinding activity of both EIF4-A and EIF4-F.

**Anti-Phospho-eIF4B (S406) Rabbit Monoclonal Antibody - Protocols**

Provided below are standard protocols that you may find useful for product applications.

- [Western Blot](#)
- [Blocking Peptides](#)
- [Dot Blot](#)
- [Immunohistochemistry](#)
- [Immunofluorescence](#)
- [Immunoprecipitation](#)
- [Flow Cytometry](#)
- [Cell Culture](#)

**Anti-Phospho-eIF4B (S406) Rabbit Monoclonal Antibody - Images**

Western blot analysis of Phospho-eIF4B (S406) expression in (1) HeLa cell lysate; (2) HeLa cell treated with Alkaline Phosphatase lysate.