

Anti-RASSF2 Rabbit Monoclonal Antibody
Catalog # ABO16358**Specification****Anti-RASSF2 Rabbit Monoclonal Antibody - Product Information**

Application	WB
Primary Accession	P50749
Host	Rabbit
Isotype	IgG
Reactivity	Human
Clonality	Monoclonal
Format	Liquid

Description

Anti-RASSF2 Rabbit Monoclonal Antibody . Tested in WB application. This antibody reacts with Human.

Anti-RASSF2 Rabbit Monoclonal Antibody - Additional Information

Gene ID 9770

Other Names

Ras association domain-containing protein 2, RASSF2, CENP-34
{ECO:0000303|PubMed:20813266}, KIAA0168

Calculated MW

37 kDa KDa

Application Details

WB 1:500-1:2000

Contents

Rabbit IgG in phosphate buffered saline, pH 7.4, 150mM NaCl, 0.02% sodium azide and 50% glycerol, 0.4-0.5mg/ml BSA.

Immunogen

A synthesized peptide derived from human RASSF2

Purification

Affinity-chromatography

Storage

Store at -20°C for one year. For short term storage and frequent use, store at 4°C for up to one month. Avoid repeated freeze-thaw cycles.

Anti-RASSF2 Rabbit Monoclonal Antibody - Protein Information

Name RASSF2

Synonyms CENP-34 {ECO:0000303|PubMed:20813266}, K

Function

Potential tumor suppressor. Acts as a KRAS-specific effector protein. May promote apoptosis and cell cycle arrest. Stabilizes STK3/MST2 by protecting it from proteasomal degradation.

Cellular Location

Nucleus. Cytoplasm. Chromosome, centromere, kinetochore. Note=Translocates to the cytoplasm in the presence of STK3/MST2 and STK4/MST1

Tissue Location

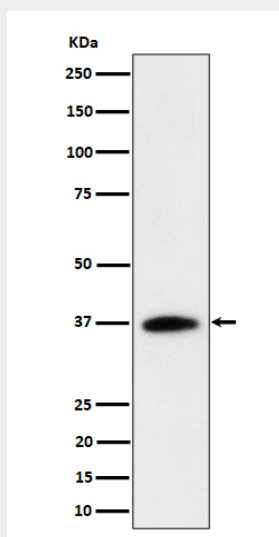
Widely expressed with highest levels in brain, placenta, peripheral blood and lung. Frequently down-regulated in lung tumor cell lines.

Anti-RASSF2 Rabbit Monoclonal Antibody - Protocols

Provided below are standard protocols that you may find useful for product applications.

- [Western Blot](#)
- [Blocking Peptides](#)
- [Dot Blot](#)
- [Immunohistochemistry](#)
- [Immunofluorescence](#)
- [Immunoprecipitation](#)
- [Flow Cytometry](#)
- [Cell Culture](#)

Anti-RASSF2 Rabbit Monoclonal Antibody - Images



Western blot analysis of RASSF2 expression in Jurkat cell lysate.