

Anti-USF1 Rabbit Monoclonal Antibody Catalog # ABO16356

Specification

Anti-USF1 Rabbit Monoclonal Antibody - Product Information

Application	WB
Primary Accession	P22415
Host	Rabbit
Isotype	IgG
Reactivity	Rat, Human, Mouse
Clonality	Monoclonal
Format	Liquid

Description

Anti-USF1 Rabbit Monoclonal Antibody . Tested in WB application. This antibody reacts with Human, Mouse, Rat.

Anti-USF1 Rabbit Monoclonal Antibody - Additional Information

Gene ID 7391

Other Names

Upstream stimulatory factor 1, Class B basic helix-loop-helix protein 11, bHLHb11, Major late transcription factor 1, USF1, BHLHB11, USF

Calculated MW

34 kDa KDa

Application Details

WB 1:500-1:2000

Contents

Rabbit IgG in phosphate buffered saline, pH 7.4, 150mM NaCl, 0.02% sodium azide and 50% glycerol, 0.4-0.5mg/ml BSA.

Immunogen

A synthesized peptide derived from human USF1

Purification

Affinity-chromatography

Storage

Store at -20°C for one year. For short term storage and frequent use, store at 4°C for up to one month. Avoid repeated freeze-thaw cycles.

Anti-USF1 Rabbit Monoclonal Antibody - Protein Information

Name USF1

Synonyms BHLHB11, USF

Function

Transcription factor that binds to a symmetrical DNA sequence (E-boxes) (5'-CACGTG-3') that is found in a variety of viral and cellular promoters.

Cellular Location

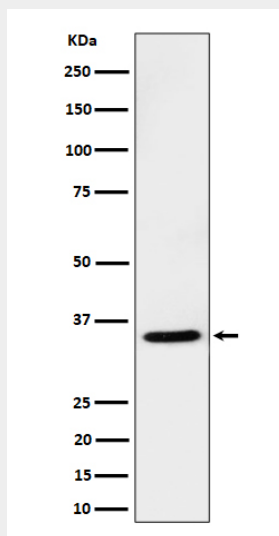
Nucleus.

Anti-USF1 Rabbit Monoclonal Antibody - Protocols

Provided below are standard protocols that you may find useful for product applications.

- [Western Blot](#)
- [Blocking Peptides](#)
- [Dot Blot](#)
- [Immunohistochemistry](#)
- [Immunofluorescence](#)
- [Immunoprecipitation](#)
- [Flow Cytometry](#)
- [Cell Culture](#)

Anti-USF1 Rabbit Monoclonal Antibody - Images



Western blot analysis of USF1 expression in Jurkat cell lysate.