

Anti-Wnt16 Rabbit Monoclonal Antibody
Catalog # ABO16352**Specification**

Anti-Wnt16 Rabbit Monoclonal Antibody - Product Information

Application	WB
Primary Accession	Q9UBV4
Host	Rabbit
Isotype	IgG
Reactivity	Rat, Human, Mouse
Clonality	Monoclonal
Format	Liquid

Description

Anti-Wnt16 Rabbit Monoclonal Antibody . Tested in WB application. This antibody reacts with Human, Mouse, Rat.

Anti-Wnt16 Rabbit Monoclonal Antibody - Additional Information

Gene ID 51384

Other Names

Protein Wnt-16, WNT16

Calculated MW

41 kDa KDa

Application Details

WB 1:500-1:2000

Contents

Rabbit IgG in phosphate buffered saline, pH 7.4, 150mM NaCl, 0.02% sodium azide and 50% glycerol, 0.4-0.5mg/ml BSA.

Immunogen

A synthesized peptide derived from human Wnt16

Purification

Affinity-chromatography

Storage

Store at -20°C for one year. For short term storage and frequent use, store at 4°C for up to one month. Avoid repeated freeze-thaw cycles.

Anti-Wnt16 Rabbit Monoclonal Antibody - Protein Information

Name WNT16

Function

Ligand for members of the frizzled family of seven transmembrane receptors. Probable developmental protein. May be a signaling molecule which affects the development of discrete regions of tissues. Is likely to signal over only few cell diameters (By similarity).

Cellular Location

Secreted, extracellular space, extracellular matrix

Tissue Location

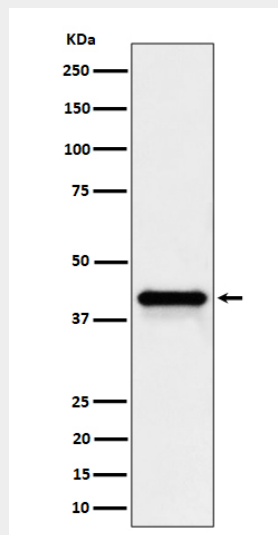
Isoform Wnt-16b is expressed in peripheral lymphoid organs such as spleen, appendix, and lymph nodes, in kidney but not in bone marrow. Isoform Wnt-16a is expressed at significant levels only in the pancreas

Anti-Wnt16 Rabbit Monoclonal Antibody - Protocols

Provided below are standard protocols that you may find useful for product applications.

- [Western Blot](#)
- [Blocking Peptides](#)
- [Dot Blot](#)
- [Immunohistochemistry](#)
- [Immunofluorescence](#)
- [Immunoprecipitation](#)
- [Flow Cytometry](#)
- [Cell Culture](#)

Anti-Wnt16 Rabbit Monoclonal Antibody - Images



Western blot analysis of Wnt16 expression in HepG2 cell lysate.