

## Anti-NAT1 Rabbit Monoclonal Antibody Catalog # ABO16348

### Specification

---

#### Anti-NAT1 Rabbit Monoclonal Antibody - Product Information

Application	WB, IF, ICC, FC
Primary Accession	<a href="#">P18440</a>
Host	Rabbit
Isotype	IgG
Reactivity	Human
Clonality	Monoclonal
Format	Liquid

#### Description

Anti-NAT1 Rabbit Monoclonal Antibody . Tested in WB, ICC/IF, Flow Cytometry applications. This antibody reacts with Human.

#### Anti-NAT1 Rabbit Monoclonal Antibody - Additional Information

##### Gene ID 9

##### Other Names

Arylamine N-acetyltransferase 1, 2.3.1.5, Arylamide acetylase 1, Monomorphic arylamine N-acetyltransferase, MNAT, N-acetyltransferase type 1, NAT-1, NAT1, AAC1

##### Calculated MW

30 kDa KDa

##### Application Details

WB 1:500-1:2000<br>ICC/IF 1:50-1:200<br>FC 1:50

##### Contents

Rabbit IgG in phosphate buffered saline, pH 7.4, 150mM NaCl, 0.02% sodium azide and 50% glycerol, 0.4-0.5mg/ml BSA.

##### Immunogen

A synthesized peptide derived from human NAT1

##### Purification

Affinity-chromatography

##### Storage

Store at -20°C for one year. For short term storage and frequent use, store at 4°C for up to one month. Avoid repeated freeze-thaw cycles.

#### Anti-NAT1 Rabbit Monoclonal Antibody - Protein Information

Name NAT1

## Synonyms AAC1

## Function

Participates in the detoxification of a plethora of hydrazine and arylamine drugs. Catalyzes the N- or O-acetylation of various arylamine and heterocyclic amine substrates and is able to bioactivate several known carcinogens.

## Cellular Location

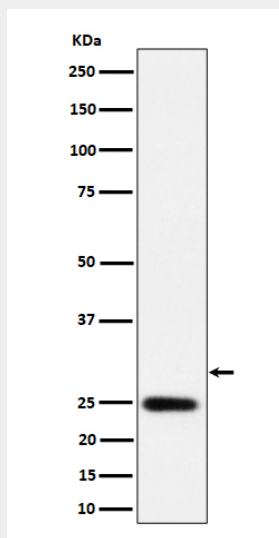
Cytoplasm.

## Anti-NAT1 Rabbit Monoclonal Antibody - Protocols

Provided below are standard protocols that you may find useful for product applications.

- [Western Blot](#)
- [Blocking Peptides](#)
- [Dot Blot](#)
- [Immunohistochemistry](#)
- [Immunofluorescence](#)
- [Immunoprecipitation](#)
- [Flow Cytometry](#)
- [Cell Culture](#)

## Anti-NAT1 Rabbit Monoclonal Antibody - Images



Western blot analysis of NAT1 expression in LnCaP cell lysate.