

Anti-Phospho-MCM2 (S108) Rabbit Monoclonal Antibody Catalog # ABO16340

Specification

Anti-Phospho-MCM2 (S108) Rabbit Monoclonal Antibody - Product Information

Application	WB, IF, ICC, IP
Primary Accession	P49736
Host	Rabbit
Isotype	IgG
Reactivity	Rat, Human, Mouse
Clonality	Monoclonal
Format	Liquid

Description

Anti-Phospho-MCM2 (S108) Rabbit Monoclonal Antibody . Tested in WB, ICC/IF, IP applications. This antibody reacts with Human, Mouse, Rat.

Anti-Phospho-MCM2 (S108) Rabbit Monoclonal Antibody - Additional Information

Gene ID 4171

Other Names

DNA replication licensing factor MCM2, 3.6.4.12, Minichromosome maintenance protein 2 homolog, Nuclear protein BM28, MCM2 ([HGNC:6944](http://www.genenames.org/cgi-bin/gene_symbol_report?hgnc_id=6944))

Calculated MW

125 kDa KDa

Application Details

WB 1:500-1:2000
ICC/IF 1:50-1:200
IP 1:50

Contents

Rabbit IgG in phosphate buffered saline, pH 7.4, 150mM NaCl, 0.02% sodium azide and 50% glycerol, 0.4-0.5mg/ml BSA.

Immunogen

A synthesized peptide derived from human Phospho-MCM2 (S108)

Purification

Affinity-chromatography

Storage

Store at -20°C for one year. For short term storage and frequent use, store at 4°C for up to one month. Avoid repeated freeze-thaw cycles.

Anti-Phospho-MCM2 (S108) Rabbit Monoclonal Antibody - Protein Information

Name MCM2 ([HGNC:6944](#))

Function

Acts as a component of the MCM2-7 complex (MCM complex) which is the replicative helicase essential for 'once per cell cycle' DNA replication initiation and elongation in eukaryotic cells. Core component of CDC45-MCM-GINS (CMG) helicase, the molecular machine that unwinds template DNA during replication, and around which the replisome is built (PubMed:32453425, PubMed:34694004, PubMed:34700328, PubMed:35585232). The active ATPase sites in the MCM2-7 ring are formed through the interaction surfaces of two neighboring subunits such that a critical structure of a conserved arginine finger motif is provided in trans relative to the ATP-binding site of the Walker A box of the adjacent subunit. The six ATPase active sites, however, are likely to contribute differentially to the complex helicase activity (PubMed:32453425). Required for the entry in S phase and for cell division (PubMed:8175912). Plays a role in terminally differentiated hair cells development of the cochlea and induces cells apoptosis (PubMed:26196677).

Cellular Location

Nucleus. Chromosome. Note=Associated with chromatin before the formation of nuclei and detaches from it as DNA replication progresses. {ECO:0000250|UniProtKB:P55861}

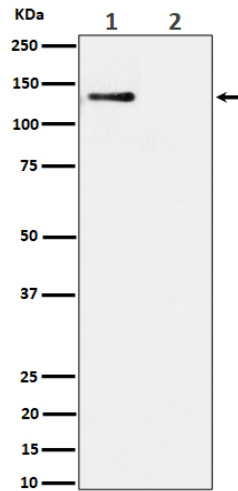
Anti-Phospho-MCM2 (S108) Rabbit Monoclonal Antibody - Protocols

Provided below are standard protocols that you may find useful for product applications.

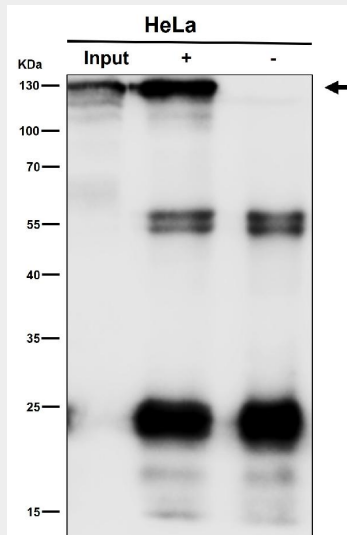
- [Western Blot](#)
- [Blocking Peptides](#)
- [Dot Blot](#)
- [Immunohistochemistry](#)
- [Immunofluorescence](#)
- [Immunoprecipitation](#)
- [Flow Cytometry](#)
- [Cell Culture](#)

Anti-Phospho-MCM2 (S108) Rabbit Monoclonal Antibody - Images





Western blot analysis of Phospho-MCM2 (S108) expression in (1) HeLa cell lysate; (2) HeLa cell treated with alkaline phosphatase lysate.



Immunoprecipitate (IP) analysis using the Antibody at 1:50 dilution. (wb at 1:1K dilution)