

Anti-HMG4 Rabbit Monoclonal Antibody
Catalog # ABO16328**Specification**

Anti-HMG4 Rabbit Monoclonal Antibody - Product Information

Application	WB
Primary Accession	O15347
Host	Rabbit
Isotype	IgG
Reactivity	Human, Mouse
Clonality	Monoclonal
Format	Liquid

Description

Anti-HMG4 Rabbit Monoclonal Antibody . Tested in WB application. This antibody reacts with Human, Mouse.

Anti-HMG4 Rabbit Monoclonal Antibody - Additional Information

Gene ID 3149

Other Names

High mobility group protein B3, High mobility group protein 2a, HMG-2a, High mobility group protein 4, HMG-4, HMGB3, HMG2A, HMG4

Calculated MW

24 kDa KDa

Application Details

WB 1:500-1:2000

Contents

Rabbit IgG in phosphate buffered saline, pH 7.4, 150mM NaCl, 0.02% sodium azide and 50% glycerol, 0.4-0.5mg/ml BSA.

Immunogen

A synthesized peptide derived from human HMG4

Purification

Affinity-chromatography

Storage

Store at -20°C for one year. For short term storage and frequent use, store at 4°C for up to one month. Avoid repeated freeze-thaw cycles.

Anti-HMG4 Rabbit Monoclonal Antibody - Protein Information

Name HMGB3

Synonyms HMG2A, HMG4

Function

Multifunctional protein with various roles in different cellular compartments. May act in a redox sensitive manner. Associates with chromatin and binds DNA with a preference for non-canonical DNA structures such as single-stranded DNA. Can bend DNA and enhance DNA flexibility by looping thus providing a mechanism to promote activities on various gene promoters (By similarity). Proposed to be involved in the innate immune response to nucleic acids by acting as a cytoplasmic promiscuous immunogenic DNA/RNA sensor (By similarity). Negatively regulates B-cell and myeloid cell differentiation. In hematopoietic stem cells may regulate the balance between self-renewal and differentiation. Involved in negative regulation of canonical Wnt signaling (By similarity).

Cellular Location

Nucleus {ECO:0000250|UniProtKB:P40618, ECO:0000255|PROSITE-ProRule:PRU00267}.
Chromosome Cytoplasm {ECO:0000250|UniProtKB:O54879}

Tissue Location

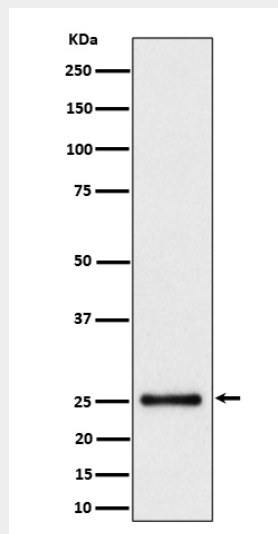
Expressed predominantly in placenta.

Anti-HMG4 Rabbit Monoclonal Antibody - Protocols

Provided below are standard protocols that you may find useful for product applications.

- [Western Blot](#)
- [Blocking Peptides](#)
- [Dot Blot](#)
- [Immunohistochemistry](#)
- [Immunofluorescence](#)
- [Immunoprecipitation](#)
- [Flow Cytometry](#)
- [Cell Culture](#)

Anti-HMG4 Rabbit Monoclonal Antibody - Images



Western blot analysis of HMG4 expression in HeLa cell lysate.