

Anti-Cystatin B Rabbit Monoclonal Antibody Catalog # ABO16323

Specification

Anti-Cystatin B Rabbit Monoclonal Antibody - Product Information

Application	WB, IHC
Primary Accession	P04080
Host	Rabbit
Isotype	IgG
Reactivity	Rat, Human
Clonality	Monoclonal
Format	Liquid

Description

Anti-Cystatin B Rabbit Monoclonal Antibody . Tested in WB, IHC applications. This antibody reacts with Human, Rat.

Anti-Cystatin B Rabbit Monoclonal Antibody - Additional Information

Gene ID 1476

Other Names

Cystatin-B, CPI-B, Liver thiol proteinase inhibitor, Stefin-B, CSTB, CST6, STFB

Calculated MW

14 kDa KDa

Application Details

WB 1:500-1:2000
IHC 1:50-1:200

Contents

Rabbit IgG in phosphate buffered saline, pH 7.4, 150mM NaCl, 0.02% sodium azide and 50% glycerol, 0.4-0.5mg/ml BSA.

Immunogen

A synthesized peptide derived from human Cystatin B

Purification

Affinity-chromatography

Storage

Store at -20°C for one year. For short term storage and frequent use, store at 4°C for up to one month. Avoid repeated freeze-thaw cycles.

Anti-Cystatin B Rabbit Monoclonal Antibody - Protein Information

Name CSTB

Synonyms CST6, STFB

Function

This is an intracellular thiol proteinase inhibitor. Tightly binding reversible inhibitor of cathepsins L, H and B.

Cellular Location

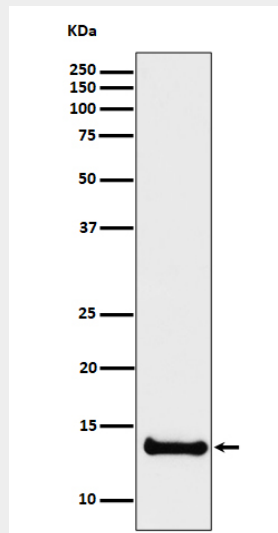
Cytoplasm. Nucleus

Anti-Cystatin B Rabbit Monoclonal Antibody - Protocols

Provided below are standard protocols that you may find useful for product applications.

- [Western Blot](#)
- [Blocking Peptides](#)
- [Dot Blot](#)
- [Immunohistochemistry](#)
- [Immunofluorescence](#)
- [Immunoprecipitation](#)
- [Flow Cytometry](#)
- [Cell Culture](#)

Anti-Cystatin B Rabbit Monoclonal Antibody - Images



Western blot analysis of Cystatin B expression in U87-MG cell lysate.