

Anti-RAB5C / RABL Rabbit Monoclonal Antibody
Catalog # ABO16319

Specification

Anti-RAB5C / RABL Rabbit Monoclonal Antibody - Product Information

Application	WB, IHC, IF, ICC
Primary Accession	P51148
Host	Rabbit
Isotype	IgG
Reactivity	Rat, Human, Mouse
Clonality	Monoclonal
Format	Liquid

Description

Anti-RAB5C / RABL Rabbit Monoclonal Antibody . Tested in WB, IHC, ICC/IF applications. This antibody reacts with Human, Mouse, Rat.

Anti-RAB5C / RABL Rabbit Monoclonal Antibody - Additional Information

Gene ID 5878

Other Names

Ras-related protein Rab-5C, 3.6.5.2, L1880, RAB5L, RAB5C, RABL

Calculated MW

23 kDa KDa

Application Details

WB 1:500-1:2000
IHC 1:50-1:200
ICC/IF 1:50-1:200

Contents

Rabbit IgG in phosphate buffered saline, pH 7.4, 150mM NaCl, 0.02% sodium azide and 50% glycerol, 0.4-0.5mg/ml BSA.

Immunogen

A synthesized peptide derived from human RAB5C / RABL

Purification

Affinity-chromatography

Storage

Store at -20°C for one year. For short term storage and frequent use, store at 4°C for up to one month. Avoid repeated freeze-thaw cycles.

Anti-RAB5C / RABL Rabbit Monoclonal Antibody - Protein Information

Name RAB5C

Synonyms RABL

Function

Protein transport. Probably involved in vesicular traffic.

Cellular Location

Cell membrane {ECO:0000250|UniProtKB:P20339}; Lipid-anchor {ECO:0000250|UniProtKB:P20339}; Cytoplasmic side {ECO:0000250|UniProtKB:P20339}. Early endosome membrane {ECO:0000250|UniProtKB:P20339}; Lipid-anchor {ECO:0000250|UniProtKB:P20339}. Melanosome. Note=Identified by mass spectrometry in melanosome fractions from stage I to stage IV

Anti-RAB5C / RABL Rabbit Monoclonal Antibody - Protocols

Provided below are standard protocols that you may find useful for product applications.

- [Western Blot](#)
- [Blocking Peptides](#)
- [Dot Blot](#)
- [Immunohistochemistry](#)
- [Immunofluorescence](#)
- [Immunoprecipitation](#)
- [Flow Cytometry](#)
- [Cell Culture](#)

Anti-RAB5C / RABL Rabbit Monoclonal Antibody - Images

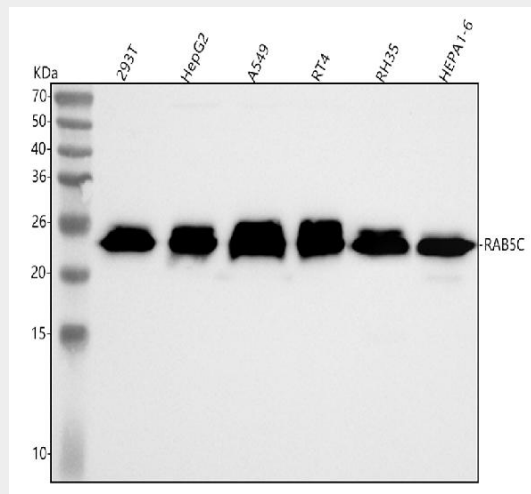


Figure 1. Western blot analysis of RAB5C/RABL using anti-RAB5C/RABL antibody (M05148-1). Electrophoresis was performed on a 5-20% SDS-PAGE gel at 70V (Stacking gel) / 90V (Resolving gel) for 2-3 hours. The sample well of each lane was loaded with 30 ug of sample under reducing conditions.

Lane 1: human 293T whole cell lysates,
Lane 2: human HepG2 whole cell lysates,
Lane 3: human A549 whole cell lysates,
Lane 4: human RT4 whole cell lysates,
Lane 5: rat RH35 whole cell lysates,
Lane 6: mouse HEPA1-6 whole cell lysates.

After electrophoresis, proteins were transferred to a nitrocellulose membrane at 150 mA for 50-90

minutes. Blocked the membrane with 5% non-fat milk/TBS for 1.5 hour at RT. The membrane was incubated with rabbit anti-RAB5C/RABL antigen affinity purified monoclonal antibody (Catalog # M05148-1) at 1:500 overnight at 4°C, then washed with TBS-0.1%Tween 3 times with 5 minutes each and probed with a goat anti-rabbit IgG-HRP secondary antibody at a dilution of 1:1000 for 1.5 hour at RT. The signal is developed using an Enhanced Chemiluminescent detection (ECL) kit (Catalog # EK1002) with Tanon 5200 system. A specific band was detected for RAB5C/RABL at approximately 23 kDa. The expected band size for RAB5C/RABL is at 23 kDa.