

Anti-ZHX2 Rabbit Monoclonal Antibody
Catalog # ABO16316**Specification**

Anti-ZHX2 Rabbit Monoclonal Antibody - Product Information

Application	WB, IF, ICC, FC
Primary Accession	Q9Y6X8
Host	Rabbit
Isotype	IgG
Reactivity	Rat, Human, Mouse
Clonality	Monoclonal
Format	Liquid

Description

Anti-ZHX2 Rabbit Monoclonal Antibody . Tested in WB, ICC/IF, Flow Cytometry applications. This antibody reacts with Human, Mouse, Rat.

Anti-ZHX2 Rabbit Monoclonal Antibody - Additional Information

Gene ID 22882

Other Names

Zinc fingers and homeoboxes protein 2, Alpha-fetoprotein regulator 1, AFP regulator 1, Regulator of AFP, Zinc finger and homeodomain protein 2, ZHX2, AFR1, KIAA0854, RAF

Calculated MW

110 kDa KDa

Application Details

WB 1:500-1:2000
ICC/IF 1:50-1:200
FC 1:50

Contents

Rabbit IgG in phosphate buffered saline, pH 7.4, 150mM NaCl, 0.02% sodium azide and 50% glycerol, 0.4-0.5mg/ml BSA.

Immunogen

A synthesized peptide derived from human ZHX2

Purification

Affinity-chromatography

Storage

Store at -20°C for one year. For short term storage and frequent use, store at 4°C for up to one month. Avoid repeated freeze-thaw cycles.

Anti-ZHX2 Rabbit Monoclonal Antibody - Protein Information

Name ZHX2

Synonyms AFR1, KIAA0854, RAF

Function

Acts as a transcriptional repressor (PubMed:12741956). Represses the promoter activity of the CDC25C gene stimulated by NFYA (PubMed:12741956). May play a role in retinal development where it regulates the composition of bipolar cell populations, by promoting differentiation of bipolar OFF-type cells (By similarity). In the brain, may promote maintenance and suppress differentiation of neural progenitor cells in the developing cortex (By similarity).

Cellular Location

Nucleus {ECO:0000255|PROSITE-ProRule:PRU00108, ECO:0000269|PubMed:12741956, ECO:0000269|PubMed:17056598} Note=Colocalizes with EFN1 intracellular domain in the nucleus {ECO:0000250|UniProtKB:Q8C0C0}

Tissue Location

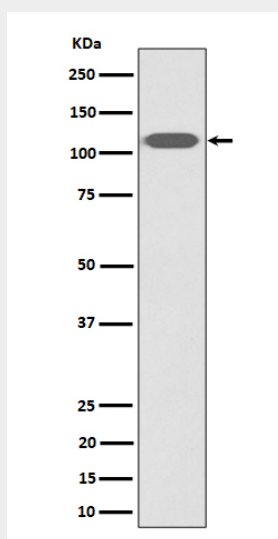
Ubiquitously expressed. Expressed in podocytes.

Anti-ZHX2 Rabbit Monoclonal Antibody - Protocols

Provided below are standard protocols that you may find useful for product applications.

- [Western Blot](#)
- [Blocking Peptides](#)
- [Dot Blot](#)
- [Immunohistochemistry](#)
- [Immunofluorescence](#)
- [Immunoprecipitation](#)
- [Flow Cytometry](#)
- [Cell Culture](#)

Anti-ZHX2 Rabbit Monoclonal Antibody - Images



Western blot analysis of ZHX2 expression in HeLa cell lysate.