

## Anti-MAP3K4 Rabbit Monoclonal Antibody Catalog # ABO16305

### Specification

---

#### Anti-MAP3K4 Rabbit Monoclonal Antibody - Product Information

Application	WB, IHC
Primary Accession	<a href="#">Q9Y6R4</a>
Host	Rabbit
Isotype	IgG
Reactivity	Human
Clonality	Monoclonal
Format	Liquid

#### Description

Anti-MAP3K4 Rabbit Monoclonal Antibody . Tested in WB, IHC applications. This antibody reacts with Human.

#### Anti-MAP3K4 Rabbit Monoclonal Antibody - Additional Information

Gene ID 4216

#### Other Names

Mitogen-activated protein kinase kinase kinase 4, 2.7.11.25, MAP three kinase 1, MAPK/ERK kinase kinase 4, MEK kinase 4, MEKK 4, MAP3K4, KIAA0213, MAPKKK4, MEKK4, MTK1

#### Calculated MW

190 kDa KDa

#### Application Details

WB 1:500-1:2000<br>IHC 1:50-1:200

#### Contents

Rabbit IgG in phosphate buffered saline, pH 7.4, 150mM NaCl, 0.02% sodium azide and 50% glycerol, 0.4-0.5mg/ml BSA.

#### Immunogen

A synthesized peptide derived from human MAP3K4

#### Purification

Affinity-chromatography

#### Storage

Store at -20°C for one year. For short term storage and frequent use, store at 4°C for up to one month. Avoid repeated freeze-thaw cycles.

#### Anti-MAP3K4 Rabbit Monoclonal Antibody - Protein Information

Name MAP3K4

**Synonyms** KIAA0213, MAPKKK4, MEKK4, MTK1

**Function**

Component of a protein kinase signal transduction cascade. Activates the CSBP2, P38 and JNK MAPK pathways, but not the ERK pathway. Specifically phosphorylates and activates MAP2K4 and MAP2K6.

**Cellular Location**

Cytoplasm, perinuclear region. Note=Localized in perinuclear vesicular-like structures, probably Golgi-associated vesicles.

**Tissue Location**

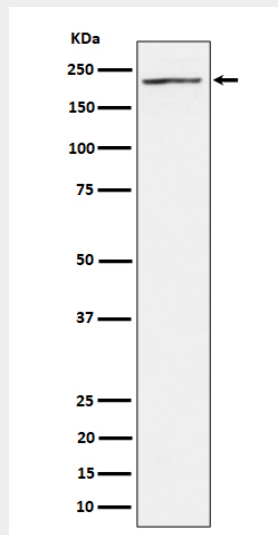
Expressed at high levels in heart, placenta, skeletal muscle and pancreas, and at lower levels in other tissues

**Anti-MAP3K4 Rabbit Monoclonal Antibody - Protocols**

Provided below are standard protocols that you may find useful for product applications.

- [Western Blot](#)
- [Blocking Peptides](#)
- [Dot Blot](#)
- [Immunohistochemistry](#)
- [Immunofluorescence](#)
- [Immunoprecipitation](#)
- [Flow Cytometry](#)
- [Cell Culture](#)

**Anti-MAP3K4 Rabbit Monoclonal Antibody - Images**



Western blot analysis of MAP3K4 expression in 293T cell lysate.