

**Anti-CLPX Rabbit Monoclonal Antibody**  
**Catalog # ABO16302****Specification**

---

**Anti-CLPX Rabbit Monoclonal Antibody - Product Information**

Application	WB, IF, ICC
Primary Accession	<a href="#">O76031</a>
Host	Rabbit
Isotype	IgG
Reactivity	Rat, Human, Mouse
Clonality	Monoclonal
Format	Liquid

**Description**

Anti-CLPX Rabbit Monoclonal Antibody . Tested in WB, ICC/IF applications. This antibody reacts with Human, Mouse, Rat.

**Anti-CLPX Rabbit Monoclonal Antibody - Additional Information**

**Gene ID** 10845

**Other Names**

ATP-dependent Clp protease ATP-binding subunit clpX-like, mitochondrial, CLPX

**Calculated MW**

69 kDa KDa

**Application Details**

WB 1:500-1:2000<br>ICC/IF 1:50-1:200

**Contents**

Rabbit IgG in phosphate buffered saline, pH 7.4, 150mM NaCl, 0.02% sodium azide and 50% glycerol, 0.4-0.5mg/ml BSA.

**Immunogen**

A synthesized peptide derived from human CLPX

**Purification**

Affinity-chromatography

**Storage**

**Store at -20°C for one year. For short term storage and frequent use, store at 4°C for up to one month. Avoid repeated freeze-thaw cycles.**

**Anti-CLPX Rabbit Monoclonal Antibody - Protein Information**

**Name** CLPX ([HGNC:2088](#))

### Function

ATP-dependent chaperone that functions as an unfoldase. As part of the ClpXP protease complex, it recognizes specific protein substrates, unfolds them using energy derived from ATP hydrolysis, and then translocates them to the proteolytic subunit (CLPP) of the ClpXP complex for degradation (PubMed:<a href="http://www.uniprot.org/citations/11923310" target="\_blank">11923310</a>, PubMed:<a href="http://www.uniprot.org/citations/22710082" target="\_blank">22710082</a>, PubMed:<a href="http://www.uniprot.org/citations/28874591" target="\_blank">28874591</a>). Thanks to its chaperone activity, it also functions in the incorporation of the pyridoxal phosphate cofactor into 5- aminolevulinate synthase, thereby activating 5-aminolevulinate (ALA) synthesis, the first step in heme biosynthesis (PubMed:<a href="http://www.uniprot.org/citations/28874591" target="\_blank">28874591</a>). This chaperone is also involved in the control of mtDNA nucleoid distribution, by regulating mitochondrial transcription factor A (TFAM) activity (PubMed:<a href="http://www.uniprot.org/citations/22841477" target="\_blank">22841477</a>).

### Cellular Location

Mitochondrion. Mitochondrion matrix, mitochondrion nucleoid

### Tissue Location

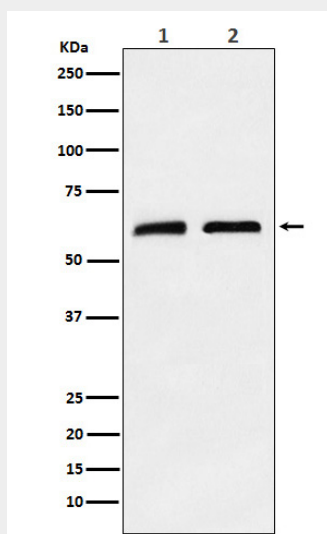
Higher expression in skeletal muscle and heart and to a lesser extent in liver, brain, placenta, lung, kidney and pancreas.

### Anti-CLPX Rabbit Monoclonal Antibody - Protocols

Provided below are standard protocols that you may find useful for product applications.

- [Western Blot](#)
- [Blocking Peptides](#)
- [Dot Blot](#)
- [Immunohistochemistry](#)
- [Immunofluorescence](#)
- [Immunoprecipitation](#)
- [Flow Cytometry](#)
- [Cell Culture](#)

### Anti-CLPX Rabbit Monoclonal Antibody - Images



Western blot analysis of CLPX expression in (1) A673 cell lysate; (2) Mouse brain lysate.