

Anti-Semaphorin 4D / CD100 Rabbit Monoclonal Antibody
Catalog # ABO16290

Specification

Anti-Semaphorin 4D / CD100 Rabbit Monoclonal Antibody - Product Information

Application	WB, IHC, IF, ICC
Primary Accession	Q92854
Host	Rabbit
Isotype	IgG
Reactivity	Human
Clonality	Monoclonal
Format	Liquid

Description

Anti-Semaphorin 4D / CD100 Rabbit Monoclonal Antibody . Tested in WB, IHC, ICC/IF applications. This antibody reacts with Human.

Anti-Semaphorin 4D / CD100 Rabbit Monoclonal Antibody - Additional Information

Gene ID 10507

Other Names

Semaphorin-4D, A8, BB18, GR3, CD100, SEMA4D, C9orf164, CD100, SEMAJ

Calculated MW

120 kDa, 140 kDa KDa

Application Details

WB 1:500-1:2000
IHC 1:50-1:200
ICC/IF 1:50-1:200

Contents

Rabbit IgG in phosphate buffered saline, pH 7.4, 150mM NaCl, 0.02% sodium azide and 50% glycerol, 0.4-0.5mg/ml BSA.

Immunogen

A synthesized peptide derived from human Semaphorin 4D / CD100

Purification

Affinity-chromatography

Storage

Store at -20°C for one year. For short term storage and frequent use, store at 4°C for up to one month. Avoid repeated freeze-thaw cycles.

Anti-Semaphorin 4D / CD100 Rabbit Monoclonal Antibody - Protein Information

Name SEMA4D

Synonyms C9orf164, CD100, SEMA1

Function

Cell surface receptor for PLXNB1 and PLXNB2 that plays an important role in cell-cell signaling (PubMed:20877282). Regulates GABAergic synapse development (By similarity). Promotes the development of inhibitory synapses in a PLXNB1-dependent manner (By similarity). Modulates the complexity and arborization of developing neurites in hippocampal neurons by activating PLXNB1 and interaction with PLXNB1 mediates activation of RHOA (PubMed:19788569). Promotes the migration of cerebellar granule cells (PubMed:16055703). Plays a role in the immune system; induces B-cells to aggregate and improves their viability (in vitro) (PubMed:8876214). Induces endothelial cell migration through the activation of PTK2B/PYK2, SRC, and the phosphatidylinositol 3-kinase-AKT pathway (PubMed:16055703).

Cellular Location

Cell membrane; Single-pass type I membrane protein

Tissue Location

Strongly expressed in skeletal muscle, peripheral blood lymphocytes, spleen, and thymus and also expressed at lower levels in testes, brain, kidney, small intestine, prostate, heart, placenta, lung and pancreas, but not in colon and liver

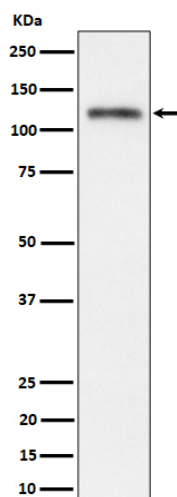
Anti-Semaphorin 4D / CD100 Rabbit Monoclonal Antibody - Protocols

Provided below are standard protocols that you may find useful for product applications.

- [Western Blot](#)
- [Blocking Peptides](#)
- [Dot Blot](#)
- [Immunohistochemistry](#)
- [Immunofluorescence](#)
- [Immunoprecipitation](#)
- [Flow Cytometry](#)
- [Cell Culture](#)

Anti-Semaphorin 4D / CD100 Rabbit Monoclonal Antibody - Images





Western blot analysis of Semaphorin 4D / CD100 expression in SH-SY5Y cell lysate.