

Anti-CRTC3 Rabbit Monoclonal Antibody
Catalog # ABO16287**Specification**

Anti-CRTC3 Rabbit Monoclonal Antibody - Product Information

Application	WB, IHC, IF, ICC
Primary Accession	Q6UUV7
Host	Rabbit
Isotype	IgG
Reactivity	Rat, Human, Mouse
Clonality	Monoclonal
Format	Liquid

Description

Anti-CRTC3 Rabbit Monoclonal Antibody . Tested in WB, IHC, ICC/IF applications. This antibody reacts with Human, Mouse, Rat.

Anti-CRTC3 Rabbit Monoclonal Antibody - Additional Information

Gene ID 64784

Other Names

CREB-regulated transcription coactivator 3, Transducer of regulated cAMP response element-binding protein 3, TORC-3, Transducer of CREB protein 3, CRTC3, TORC3

Calculated MW

78 kDa KDa

Application Details

WB 1:500-1:2000
IHC 1:50-1:200
ICC/IF 1:50-1:200

Contents

Rabbit IgG in phosphate buffered saline, pH 7.4, 150mM NaCl, 0.02% sodium azide and 50% glycerol, 0.4-0.5mg/ml BSA.

Immunogen

A synthesized peptide derived from human CRTC3

Purification

Affinity-chromatography

Storage

Store at -20°C for one year. For short term storage and frequent use, store at 4°C for up to one month. Avoid repeated freeze-thaw cycles.

Anti-CRTC3 Rabbit Monoclonal Antibody - Protein Information

Name CRTC3

Synonyms TORC3

Function

Transcriptional coactivator for CREB1 which activates transcription through both consensus and variant cAMP response element (CRE) sites. Acts as a coactivator, in the SIK/TORC signaling pathway, being active when dephosphorylated and acts independently of CREB1 'Ser-133' phosphorylation. Enhances the interaction of CREB1 with TAF4. Regulates the expression of specific CREB-activated genes such as the steroidogenic gene, StAR. Potent coactivator of PPARGC1A and inducer of mitochondrial biogenesis in muscle cells. Also coactivator for TAX activation of the human T-cell leukemia virus type 1 (HTLV-1) long terminal repeats (LTR).

Cellular Location

Nucleus. Cytoplasm. Note=Appears to be mainly nuclear (PubMed:15454081). Translocates to the nucleus following adenylyl cyclase or MAP kinase activation (PubMed:30611118)

Tissue Location

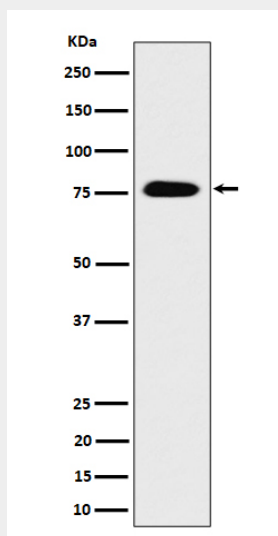
Predominantly expressed in B and T lymphocytes. Highest levels in lung. Also expressed in brain, colon, heart, kidney, ovary, and prostate. Weak expression in liver, pancreas, muscle, small intestine, spleen and stomach.

Anti-CRTC3 Rabbit Monoclonal Antibody - Protocols

Provided below are standard protocols that you may find useful for product applications.

- [Western Blot](#)
- [Blocking Peptides](#)
- [Dot Blot](#)
- [Immunohistochemistry](#)
- [Immunofluorescence](#)
- [Immunoprecipitation](#)
- [Flow Cytometry](#)
- [Cell Culture](#)

Anti-CRTC3 Rabbit Monoclonal Antibody - Images



Western blot analysis of CRTC3 expression in 293 cell lysate.