

Anti-HIF Prolyl Hydroxylases Rabbit Monoclonal Antibody
Catalog # ABO16286

Specification

Anti-HIF Prolyl Hydroxylases Rabbit Monoclonal Antibody - Product Information

Application	WB, IHC, IP, FC
Primary Accession	O9NXG6
Host	Rabbit
Isotype	IgG
Reactivity	Human
Clonality	Monoclonal
Format	Liquid

Description

Anti-HIF Prolyl Hydroxylases Rabbit Monoclonal Antibody . Tested in WB, IHC, IP, Flow Cytometry applications. This antibody reacts with Human.

Anti-HIF Prolyl Hydroxylases Rabbit Monoclonal Antibody - Additional Information

Gene ID 54681

Other Names

Transmembrane prolyl 4-hydroxylase, P4H-TM, 1.14.11.29, Hypoxia-inducible factor prolyl hydroxylase 4, HIF-PH4, HIF-prolyl hydroxylase 4, HPH-4, P4HTM, PH4

Calculated MW

47 kDa KDa

Application Details

WB 1:500-1:2000
IHC 1:50-1:200
IP 1:50
FC 1:50

Contents

Rabbit IgG in phosphate buffered saline, pH 7.4, 150mM NaCl, 0.02% sodium azide and 50% glycerol, 0.4-0.5mg/ml BSA.

Immunogen

A synthesized peptide derived from human HIF Prolyl Hydroxylases

Purification

Affinity-chromatography

Storage

Store at -20°C for one year. For short term storage and frequent use, store at 4°C for up to one month. Avoid repeated freeze-thaw cycles.

Anti-HIF Prolyl Hydroxylases Rabbit Monoclonal Antibody - Protein Information

Name P4HTM

Synonyms PH4

Function

Catalyzes the post-translational formation of 4- hydroxyproline in hypoxia-inducible factor (HIF) alpha proteins. Hydroxylates HIF1A at 'Pro-402' and 'Pro-564'. May function as a cellular oxygen sensor and, under normoxic conditions, may target HIF through the hydroxylation for proteasomal degradation via the von Hippel-Lindau ubiquitination complex.

Cellular Location

Endoplasmic reticulum membrane; Single-pass type II membrane protein

Tissue Location

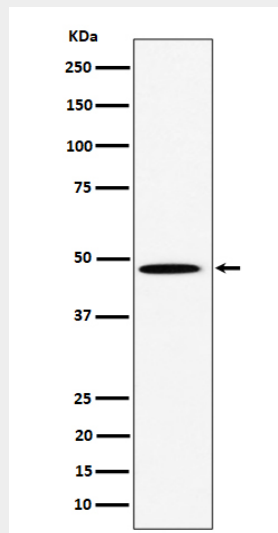
Widely expressed with highest levels in adult pancreas, heart, skeletal muscle, brain, placenta, kidney and adrenal gland. Expressed at lower levels in epiphyseal cartilage and in fibroblasts.

Anti-HIF Prolyl Hydroxylases Rabbit Monoclonal Antibody - Protocols

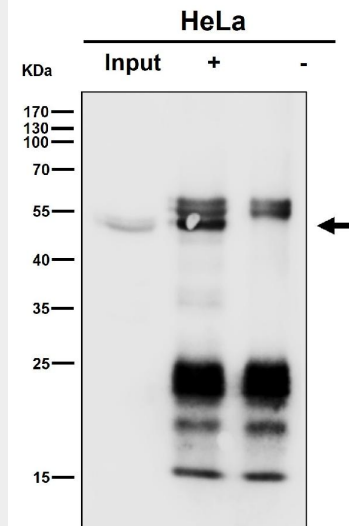
Provided below are standard protocols that you may find useful for product applications.

- [Western Blot](#)
- [Blocking Peptides](#)
- [Dot Blot](#)
- [Immunohistochemistry](#)
- [Immunofluorescence](#)
- [Immunoprecipitation](#)
- [Flow Cytometry](#)
- [Cell Culture](#)

Anti-HIF Prolyl Hydroxylases Rabbit Monoclonal Antibody - Images



Western blot analysis of HIF Prolyl Hydroxylases expression in HeLa cell lysate.



Immunoprecipitate (IP) analysis using the Antibody at 1:50 dilution. (wb at 1:1K dilution)