

## Anti-Lactate Dehydrogenase C Rabbit Monoclonal Antibody Catalog # ABO16285

### Specification

---

#### Anti-Lactate Dehydrogenase C Rabbit Monoclonal Antibody - Product Information

Application	WB
Primary Accession	<a href="#">P07864</a>
Host	Rabbit
Isotype	IgG
Reactivity	Human
Clonality	Monoclonal
Format	Liquid

#### Description

Anti-Lactate Dehydrogenase C Rabbit Monoclonal Antibody . Tested in WB application. This antibody reacts with Human.

#### Anti-Lactate Dehydrogenase C Rabbit Monoclonal Antibody - Additional Information

**Gene ID** 3948

#### Other Names

L-lactate dehydrogenase C chain, LDH-C, 1.1.1.27, Cancer/testis antigen 32, CT32, LDH testis subunit, LDH-X, LDHC, LDH3, LDHX

#### Calculated MW

35 kDa KDa

#### Application Details

WB 1:500-1:2000

#### Contents

Rabbit IgG in phosphate buffered saline, pH 7.4, 150mM NaCl, 0.02% sodium azide and 50% glycerol, 0.4-0.5mg/ml BSA.

#### Immunogen

A synthesized peptide derived from human Lactate Dehydrogenase C

#### Purification

Affinity-chromatography

#### Storage

**Store at -20°C for one year. For short term storage and frequent use, store at 4°C for up to one month. Avoid repeated freeze-thaw cycles.**

#### Anti-Lactate Dehydrogenase C Rabbit Monoclonal Antibody - Protein Information

**Name** LDHC

**Synonyms** LDH3, LDHX

**Function**

Possible role in sperm motility.

**Cellular Location**

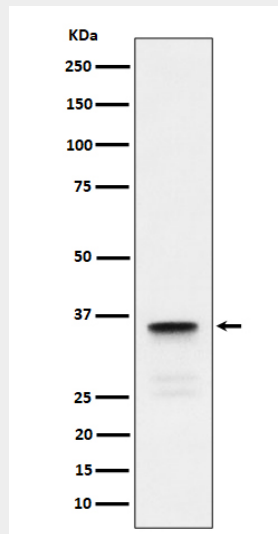
Cytoplasm.

**Anti-Lactate Dehydrogenase C Rabbit Monoclonal Antibody - Protocols**

Provided below are standard protocols that you may find useful for product applications.

- [Western Blot](#)
- [Blocking Peptides](#)
- [Dot Blot](#)
- [Immunohistochemistry](#)
- [Immunofluorescence](#)
- [Immunoprecipitation](#)
- [Flow Cytometry](#)
- [Cell Culture](#)

**Anti-Lactate Dehydrogenase C Rabbit Monoclonal Antibody - Images**



Western blot analysis of Lactate Dehydrogenase C expression in human testis lysate.