

Anti-PNMT Rabbit Monoclonal Antibody
Catalog # ABO16276

Specification

Anti-PNMT Rabbit Monoclonal Antibody - Product Information

Application	WB, IF, ICC
Primary Accession	P11086
Host	Rabbit
Isotype	IgG
Reactivity	Human, Mouse
Clonality	Monoclonal
Format	Liquid

Description

Anti-PNMT Rabbit Monoclonal Antibody . Tested in WB, ICC/IF applications. This antibody reacts with Human, Mouse.

Anti-PNMT Rabbit Monoclonal Antibody - Additional Information

Gene ID 5409

Other Names

Phenylethanolamine N-methyltransferase, PNMTase, 2.1.1.28, Noradrenaline N-methyltransferase, PNMT, PENT

Calculated MW

31 kDa KDa

Application Details

WB 1:500-1:2000
ICC/IF 1:50-1:200

Contents

Rabbit IgG in phosphate buffered saline, pH 7.4, 150mM NaCl, 0.02% sodium azide and 50% glycerol, 0.4-0.5mg/ml BSA.

Immunogen

A synthesized peptide derived from human PNMT

Purification

Affinity-chromatography

Storage

Store at -20°C for one year. For short term storage and frequent use, store at 4°C for up to one month. Avoid repeated freeze-thaw cycles.

Anti-PNMT Rabbit Monoclonal Antibody - Protein Information

Name PNMT

Synonyms PENT

Function

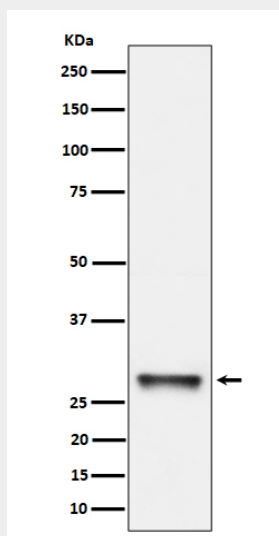
Catalyzes the transmethylation of norepinephrine (noradrenaline) to form epinephrine (adrenaline), using S-adenosyl-L-methionine as the methyl donor (PubMed:20496117). Other substrates include phenylethanolamine and octopamine (PubMed:16277617, PubMed:16363801, PubMed:8812853). Also methylates normetanephrine (By similarity).

Anti-PNMT Rabbit Monoclonal Antibody - Protocols

Provided below are standard protocols that you may find useful for product applications.

- [Western Blot](#)
- [Blocking Peptides](#)
- [Dot Blot](#)
- [Immunohistochemistry](#)
- [Immunofluorescence](#)
- [Immunoprecipitation](#)
- [Flow Cytometry](#)
- [Cell Culture](#)

Anti-PNMT Rabbit Monoclonal Antibody - Images



Western blot analysis of PNMT expression in K562 cell lysate.