

Anti-Somatostatin Receptor 1 Rabbit Monoclonal Antibody
Catalog # ABO16207

Specification

Anti-Somatostatin Receptor 1 Rabbit Monoclonal Antibody - Product Information

Application	WB, IF, ICC
Primary Accession	P30872
Host	Rabbit
Isotype	IgG
Reactivity	Human
Clonality	Monoclonal
Format	Liquid

Description

Anti-Somatostatin Receptor 1 Rabbit Monoclonal Antibody . Tested in WB, ICC/IF applications. This antibody reacts with Human.

Anti-Somatostatin Receptor 1 Rabbit Monoclonal Antibody - Additional Information

Gene ID 6751

Other Names

Somatostatin receptor type 1, SS-1-R, SS1-R, SS1R, SST1, SRIF-2, SSTR1

Calculated MW

60 kDa KDa

Application Details

WB 1:500-1:2000
ICC/IF 1:50-1:200

Contents

Rabbit IgG in phosphate buffered saline, pH 7.4, 150mM NaCl, 0.02% sodium azide and 50% glycerol, 0.4-0.5mg/ml BSA.

Immunogen

A synthesized peptide derived from human Somatostatin Receptor 1

Purification

Affinity-chromatography

Storage

Store at -20°C for one year. For short term storage and frequent use, store at 4°C for up to one month. Avoid repeated freeze-thaw cycles.

Anti-Somatostatin Receptor 1 Rabbit Monoclonal Antibody - Protein Information

Name SSTR1

Function

Receptor for somatostatin with higher affinity for somatostatin-14 than -28. This receptor is coupled via pertussis toxin sensitive G proteins to inhibition of adenylyl cyclase. In addition it stimulates phosphotyrosine phosphatase and Na(+)/H(+) exchanger via pertussis toxin insensitive G proteins.

Cellular Location

Cell membrane; Multi-pass membrane protein.

Tissue Location

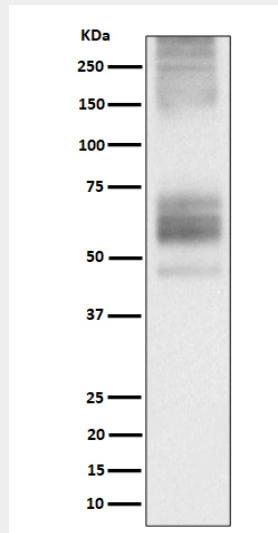
Fetal kidney, fetal liver, and adult pancreas, brain, lung, jejunum and stomach

Anti-Somatostatin Receptor 1 Rabbit Monoclonal Antibody - Protocols

Provided below are standard protocols that you may find useful for product applications.

- [Western Blot](#)
- [Blocking Peptides](#)
- [Dot Blot](#)
- [Immunohistochemistry](#)
- [Immunofluorescence](#)
- [Immunoprecipitation](#)
- [Flow Cytometry](#)
- [Cell Culture](#)

Anti-Somatostatin Receptor 1 Rabbit Monoclonal Antibody - Images



Western blot analysis of Somatostatin Receptor 1 expression in 293T transfected with Somatostatin Receptor 1 cell lysate.