

**Anti-C1s Rabbit Monoclonal Antibody**  
**Catalog # ABO16197****Specification**

---

**Anti-C1s Rabbit Monoclonal Antibody - Product Information**

Application	WB, IHC, IP
Primary Accession	<a href="#">P09871</a>
Host	Rabbit
Isotype	IgG
Reactivity	Human
Clonality	Monoclonal
Format	Liquid

**Description**

Anti-C1s Rabbit Monoclonal Antibody . Tested in WB, IHC, IP applications. This antibody reacts with Human.

**Anti-C1s Rabbit Monoclonal Antibody - Additional Information**

**Gene ID** 716

**Other Names**

Complement C1s subcomponent, 3.4.21.42, C1 esterase, Complement component 1 subcomponent s, Complement C1s subcomponent heavy chain, Complement C1s subcomponent light chain, C1S

**Calculated MW**

90 kDa KDa

**Application Details**

WB 1:500-1:2000<br>IHC 1:50-1:200<br>IP 1:50

**Contents**

Rabbit IgG in phosphate buffered saline, pH 7.4, 150mM NaCl, 0.02% sodium azide and 50% glycerol, 0.4-0.5mg/ml BSA.

**Immunogen**

A synthesized peptide derived from human C1s

**Purification**

Affinity-chromatography

Storage

**Store at -20°C for one year. For short term storage and frequent use, store at 4°C for up to one month. Avoid repeated freeze-thaw cycles.**

**Anti-C1s Rabbit Monoclonal Antibody - Protein Information**

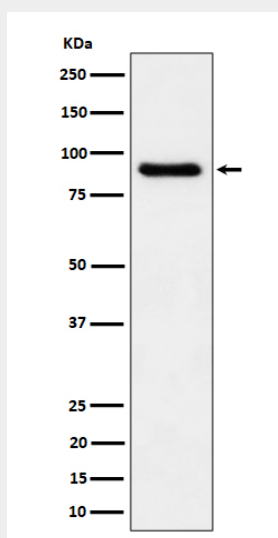
**Name C1s****Function**

C1s B chain is a serine protease that combines with C1q and C1r to form C1, the first component of the classical pathway of the complement system. C1r activates C1s so that it can, in turn, activate C2 and C4. Cleaves also IGFBP5 and thereby inhibits the trophic effects of IGF1.

**Anti-C1s Rabbit Monoclonal Antibody - Protocols**

Provided below are standard protocols that you may find useful for product applications.

- [Western Blot](#)
- [Blocking Peptides](#)
- [Dot Blot](#)
- [Immunohistochemistry](#)
- [Immunofluorescence](#)
- [Immunoprecipitation](#)
- [Flow Cytometry](#)
- [Cell Culture](#)

**Anti-C1s Rabbit Monoclonal Antibody - Images**

Western blot analysis of C1s expression in human plasma cell lysate.