

## Anti-Spermine synthase Rabbit Monoclonal Antibody Catalog # ABO16193

### Specification

---

#### Anti-Spermine synthase Rabbit Monoclonal Antibody - Product Information

Application	WB, IF, ICC
Primary Accession	<a href="#">P52788</a>
Host	Rabbit
Isotype	IgG
Reactivity	Rat, Human, Mouse
Clonality	Monoclonal
Format	Liquid

#### Description

Anti-Spermine synthase Rabbit Monoclonal Antibody . Tested in WB, ICC/IF applications. This antibody reacts with Human, Mouse, Rat.

#### Anti-Spermine synthase Rabbit Monoclonal Antibody - Additional Information

Gene ID 6611

#### Other Names

Spermine synthase, SPMSY, 2.5.1.22, Spermidine aminopropyltransferase, SMS  
{ECO:0000303|PubMed:14508504, ECO:0000312|HGNC:HGNC:11123}

#### Calculated MW

41 kDa KDa

#### Application Details

WB 1:500-1:2000<br>ICC/IF 1:50-1:200

#### Contents

Rabbit IgG in phosphate buffered saline, pH 7.4, 150mM NaCl, 0.02% sodium azide and 50% glycerol, 0.4-0.5mg/ml BSA.

#### Immunogen

A synthesized peptide derived from human Spermine synthase

#### Purification

Affinity-chromatography

Storage

Store at -20°C for one year. For short term storage and frequent use, store at 4°C for up to one month. Avoid repeated freeze-thaw cycles.

#### Anti-Spermine synthase Rabbit Monoclonal Antibody - Protein Information

**Name** SMS {ECO:0000303|PubMed:14508504, ECO:0000312|HGNC:HGNC:11123}

## Function

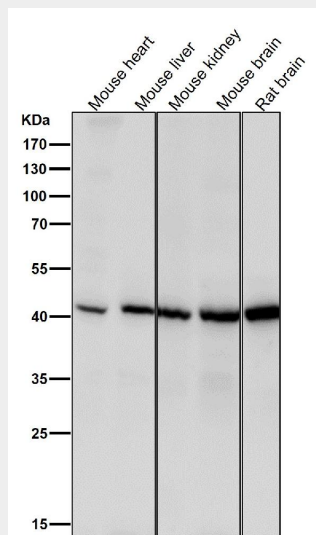
Catalyzes the production of spermine from spermidine and decarboxylated S-adenosylmethionine (dcSAM).

## Anti-Spermine synthase Rabbit Monoclonal Antibody - Protocols

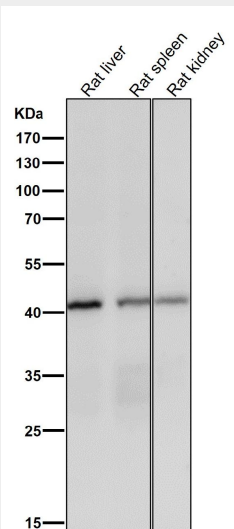
Provided below are standard protocols that you may find useful for product applications.

- [Western Blot](#)
- [Blocking Peptides](#)
- [Dot Blot](#)
- [Immunohistochemistry](#)
- [Immunofluorescence](#)
- [Immunoprecipitation](#)
- [Flow Cytometry](#)
- [Cell Culture](#)

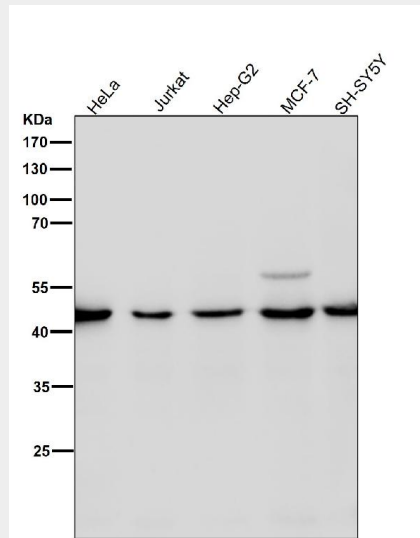
## Anti-Spermine synthase Rabbit Monoclonal Antibody - Images



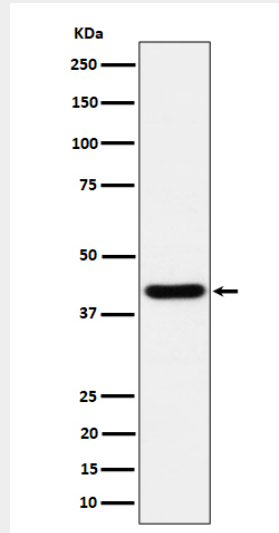
All lanes use the Antibody at 1:1K dilution for 1 hour at room temperature.



All lanes use the Antibody at 1:1K dilution for 1 hour at room temperature.



All lanes use the Antibody at 1:1K dilution for 1 hour at room temperature.



Western blot analysis of Spermine synthase expression in HeLa cell lysate.