

**Anti-ITPA Rabbit Monoclonal Antibody**  
Catalog # ABO16188**Specification****Anti-ITPA Rabbit Monoclonal Antibody - Product Information**

Application	WB, IHC
Primary Accession	<a href="#">Q9BY32</a>
Host	Rabbit
Isotype	IgG
Reactivity	Human
Clonality	Monoclonal
Format	Liquid

**Description**

Anti-ITPA Rabbit Monoclonal Antibody . Tested in WB, IHC applications. This antibody reacts with Human.

**Anti-ITPA Rabbit Monoclonal Antibody - Additional Information**

Gene ID 3704

**Other Names**

Inosine triphosphate pyrophosphatase {ECO:0000255|HAMAP-Rule:MF\_03148, ECO:0000303|PubMed:11278832}, ITPase {ECO:0000255|HAMAP-Rule:MF\_03148}, Inosine triphosphatase {ECO:0000255|HAMAP-Rule:MF\_03148}, 3.6.1.9 {ECO:0000255|HAMAP-Rule:MF\_03148, ECO:0000269|PubMed:11278832, ECO:0000269|PubMed:17090528}, Non-canonical purine NTP pyrophosphatase {ECO:0000255|HAMAP-Rule:MF\_03148}, Non-standard purine NTP pyrophosphatase {ECO:0000255|HAMAP-Rule:MF\_03148}, Nucleoside-triphosphate diphosphatase {ECO:0000255|HAMAP-Rule:MF\_03148}, Nucleoside-triphosphate pyrophosphatase {ECO:0000255|HAMAP-Rule:MF\_03148}, NTPase {ECO:0000255|HAMAP-Rule:MF\_03148}, Putative oncogene protein hlc14-06-p, ITPA {ECO:0000255|HAMAP-Rule:MF\_03148}, C20orf37

**Calculated MW**

22 kDa KDa

**Application Details**

WB 1:500-1:2000<br>IHC 1:50-1:200

**Contents**

Rabbit IgG in phosphate buffered saline, pH 7.4, 150mM NaCl, 0.02% sodium azide and 50% glycerol, 0.4-0.5mg/ml BSA.

**Immunogen**

A synthesized peptide derived from human ITPA

**Purification**

Affinity-chromatography

Storage

Store at -20°C for one year. For short term

storage and frequent use, store at 4°C for up to one month. Avoid repeated freeze-thaw cycles.

### Anti-ITPA Rabbit Monoclonal Antibody - Protein Information

**Name** ITPA {ECO:0000255|HAMAP-Rule:MF\_03148}

**Synonyms** C20orf37

#### Function

Pyrophosphatase that hydrolyzes the non-canonical purine nucleotides inosine triphosphate (ITP), deoxyinosine triphosphate (dITP) as well as 2'-deoxy-N-6-hydroxylaminopurine triphosphate (dHATP) and xanthosine 5'-triphosphate (XTP) to their respective monophosphate derivatives. The enzyme does not distinguish between the deoxy- and ribose forms. Probably excludes non-canonical purines from RNA and DNA precursor pools, thus preventing their incorporation into RNA and DNA and avoiding chromosomal lesions.

#### Cellular Location

Cytoplasm {ECO:0000255|HAMAP-Rule:MF\_03148, ECO:0000269|PubMed:11278832}

#### Tissue Location

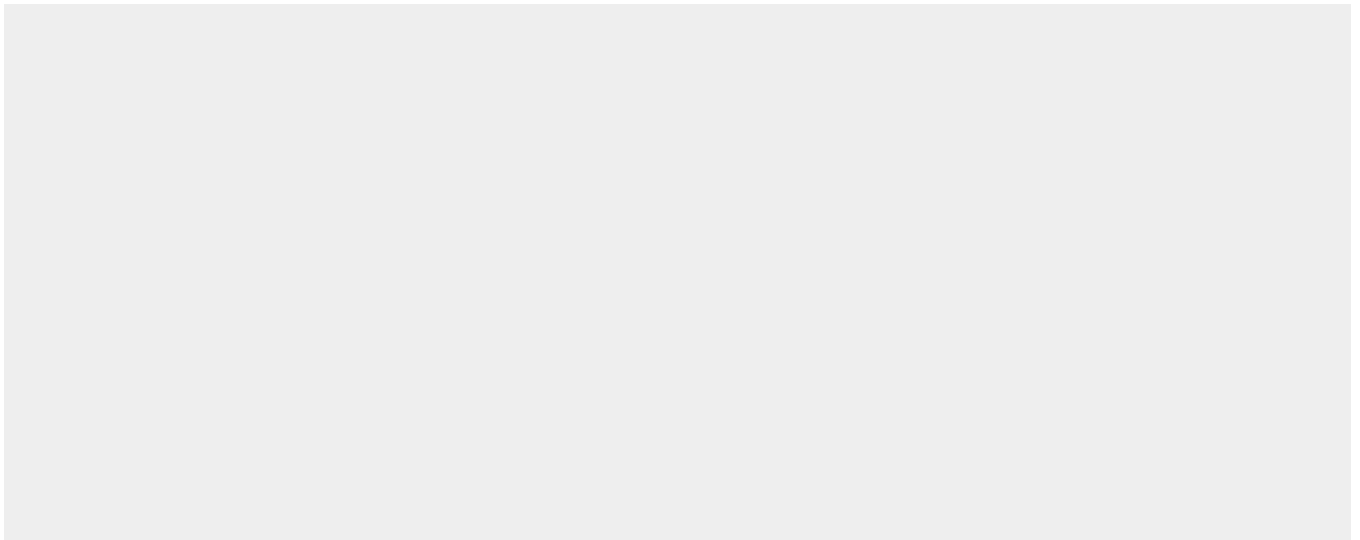
Ubiquitous. Highly expressed in heart, liver, sex glands, thyroid and adrenal gland

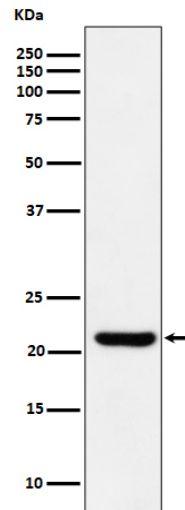
### Anti-ITPA Rabbit Monoclonal Antibody - Protocols

Provided below are standard protocols that you may find useful for product applications.

- [Western Blot](#)
- [Blocking Peptides](#)
- [Dot Blot](#)
- [Immunohistochemistry](#)
- [Immunofluorescence](#)
- [Immunoprecipitation](#)
- [Flow Cytometry](#)
- [Cell Culture](#)

### Anti-ITPA Rabbit Monoclonal Antibody - Images





Western blot analysis of ITPA expression in HepG2 cell lysate.