

**Anti-SAMM50 Rabbit Monoclonal Antibody**  
Catalog # ABO16181**Specification**

---

**Anti-SAMM50 Rabbit Monoclonal Antibody - Product Information**

Application	WB, IHC
Primary Accession	<a href="#">Q9Y512</a>
Host	Rabbit
Isotype	IgG
Reactivity	Human
Clonality	Monoclonal
Format	Liquid

**Description**

Anti-SAMM50 Rabbit Monoclonal Antibody . Tested in WB, IHC applications. This antibody reacts with Human.

**Anti-SAMM50 Rabbit Monoclonal Antibody - Additional Information**

**Gene ID** 25813

**Other Names**

Sorting and assembly machinery component 50 homolog, Transformation-related gene 3 protein, TRG-3, SAMM50, SAM50

**Calculated MW**

52 kDa KDa

**Application Details**

WB 1:500-1:2000<br>IHC 1:50-1:200

**Contents**

Rabbit IgG in phosphate buffered saline, pH 7.4, 150mM NaCl, 0.02% sodium azide and 50% glycerol, 0.4-0.5mg/ml BSA.

**Immunogen**

A synthesized peptide derived from human SAMM50

**Purification**

Affinity-chromatography

Storage

**Store at -20°C for one year. For short term storage and frequent use, store at 4°C for up to one month. Avoid repeated freeze-thaw cycles.**

**Anti-SAMM50 Rabbit Monoclonal Antibody - Protein Information**

**Name** SAMM50

## Synonyms SAM50

### Function

Plays a crucial role in the maintenance of the structure of mitochondrial cristae and the proper assembly of the mitochondrial respiratory chain complexes (PubMed:<a href="http://www.uniprot.org/citations/22252321" target="\_blank">22252321</a>, PubMed:<a href="http://www.uniprot.org/citations/25781180" target="\_blank">25781180</a>). Required for the assembly of TOMM40 into the TOM complex (PubMed:<a href="http://www.uniprot.org/citations/15644312" target="\_blank">15644312</a>).

### Cellular Location

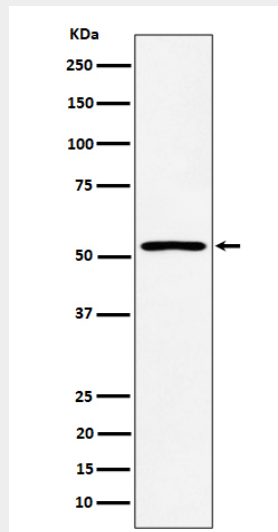
Mitochondrion outer membrane; Multi-pass membrane protein. Cytoplasm {ECO:0000250|UniProtKB:Q6AXV4}. Mitochondrion

## Anti-SAMM50 Rabbit Monoclonal Antibody - Protocols

Provided below are standard protocols that you may find useful for product applications.

- [Western Blot](#)
- [Blocking Peptides](#)
- [Dot Blot](#)
- [Immunohistochemistry](#)
- [Immunofluorescence](#)
- [Immunoprecipitation](#)
- [Flow Cytometry](#)
- [Cell Culture](#)

## Anti-SAMM50 Rabbit Monoclonal Antibody - Images



Western blot analysis of SAMM50 expression in HepG2 cell lysate.