

Anti-AGL Rabbit Monoclonal Antibody
Catalog # ABO16180**Specification**

Anti-AGL Rabbit Monoclonal Antibody - Product Information

Application	WB, IHC, IF, ICC, FC
Primary Accession	P35573
Host	Rabbit
Isotype	IgG
Reactivity	Rat, Human, Mouse
Clonality	Monoclonal
Format	Liquid

Description

Anti-AGL Rabbit Monoclonal Antibody . Tested in WB, IHC, ICC/IF, Flow Cytometry applications. This antibody reacts with Human, Mouse, Rat.

Anti-AGL Rabbit Monoclonal Antibody - Additional Information

Gene ID 178

Other Names

Glycogen debranching enzyme, Glycogen debrancher, 4-alpha-glucanotransferase, 2.4.1.25, Oligo-1, 4-1, 4-glucantransferase, Amylo-alpha-1, 6-glucosidase, Amylo-1, 6-glucosidase, 3.2.1.33, Dextrin 6-alpha-D-glucosidase, AGL, GDE

Calculated MW

175 kDa KDa

Application Details

WB 1:500-1:2000
IHC 1:50-1:200
ICC/IF 1:50-1:200
FC 1:50

Contents

Rabbit IgG in phosphate buffered saline, pH 7.4, 150mM NaCl, 0.02% sodium azide and 50% glycerol, 0.4-0.5mg/ml BSA.

Immunogen

A synthesized peptide derived from human AGL

Purification

Affinity-chromatography

Storage

Store at -20°C for one year. For short term storage and frequent use, store at 4°C for up to one month. Avoid repeated freeze-thaw cycles.

Anti-AGL Rabbit Monoclonal Antibody - Protein Information

Name AGL

Synonyms GDE

Function

Multifunctional enzyme acting as 1,4-alpha-D-glucan:1,4- alpha-D-glucan 4-alpha-D-glycosyltransferase and amylo-1,6-glucosidase in glycogen degradation.

Cellular Location

Cytoplasm. Note=Under glycogenolytic conditions localizes to the nucleus

Tissue Location

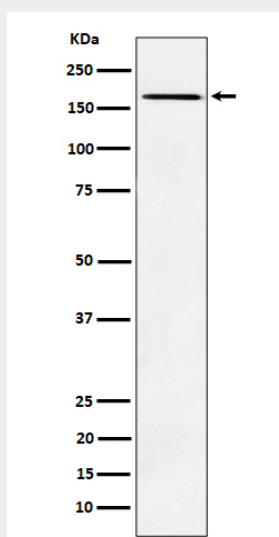
Liver, kidney and lymphoblastoid cells express predominantly isoform 1; whereas muscle and heart express not only isoform 1, but also muscle-specific isoform mRNAs (isoforms 2, 3 and 4). Isoforms 5 and 6 are present in both liver and muscle

Anti-AGL Rabbit Monoclonal Antibody - Protocols

Provided below are standard protocols that you may find useful for product applications.

- [Western Blot](#)
- [Blocking Peptides](#)
- [Dot Blot](#)
- [Immunohistochemistry](#)
- [Immunofluorescence](#)
- [Immunoprecipitation](#)
- [Flow Cytometry](#)
- [Cell Culture](#)

Anti-AGL Rabbit Monoclonal Antibody - Images



Western blot analysis of AGL expression in K562 cell lysate.