

## Anti-DPP3 Rabbit Monoclonal Antibody Catalog # ABO16178

### Specification

---

#### Anti-DPP3 Rabbit Monoclonal Antibody - Product Information

|                   |                        |
|-------------------|------------------------|
| Application       | WB, FC                 |
| Primary Accession | <a href="#">O9NY33</a> |
| Host              | Rabbit                 |
| Isotype           | IgG                    |
| Reactivity        | Human                  |
| Clonality         | Monoclonal             |
| Format            | Liquid                 |

#### Description

Anti-DPP3 Rabbit Monoclonal Antibody . Tested in WB, Flow Cytometry applications. This antibody reacts with Human.

#### Anti-DPP3 Rabbit Monoclonal Antibody - Additional Information

Gene ID 10072

#### Other Names

Dipeptidyl peptidase 3, 3.4.14.4, Dipeptidyl aminopeptidase III, Dipeptidyl arylamidase III, Dipeptidyl peptidase III, DPP III, Enkephalinase B, DPP3

#### Calculated MW

83 kDa KDa

#### Application Details

WB 1:500-1:2000<br>FC 1:50

#### Contents

Rabbit IgG in phosphate buffered saline, pH 7.4, 150mM NaCl, 0.02% sodium azide and 50% glycerol, 0.4-0.5mg/ml BSA.

#### Immunogen

A synthesized peptide derived from human DPP3

#### Purification

Affinity-chromatography

Storage

**Store at -20°C for one year. For short term storage and frequent use, store at 4°C for up to one month. Avoid repeated freeze-thaw cycles.**

#### Anti-DPP3 Rabbit Monoclonal Antibody - Protein Information

Name DPP3

### Function

Cleaves and degrades bioactive peptides, including angiotensin, Leu-enkephalin and Met-enkephalin (PubMed:<a href="http://www.uniprot.org/citations/1515063" target="\_blank">1515063</a>, PubMed:<a href="http://www.uniprot.org/citations/3233187" target="\_blank">3233187</a>). Also cleaves Arg-Arg-beta-naphthylamide (in vitro) (PubMed:<a href="http://www.uniprot.org/citations/11209758" target="\_blank">11209758</a>, PubMed:<a href="http://www.uniprot.org/citations/3233187" target="\_blank">3233187</a>, PubMed:<a href="http://www.uniprot.org/citations/9425109" target="\_blank">9425109</a>).

### Cellular Location

Cytoplasm, cytosol

### Tissue Location

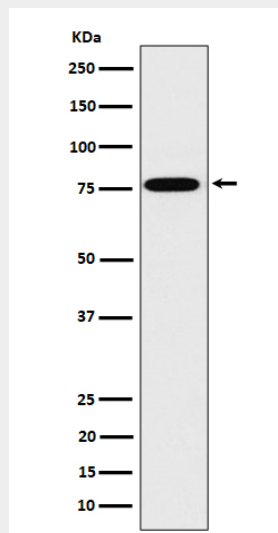
Detected in placenta (at protein level) (PubMed:3233187). Detected in erythrocytes (at protein level) (PubMed:1515063).

## Anti-DPP3 Rabbit Monoclonal Antibody - Protocols

Provided below are standard protocols that you may find useful for product applications.

- [Western Blot](#)
- [Blocking Peptides](#)
- [Dot Blot](#)
- [Immunohistochemistry](#)
- [Immunofluorescence](#)
- [Immunoprecipitation](#)
- [Flow Cytometry](#)
- [Cell Culture](#)

## Anti-DPP3 Rabbit Monoclonal Antibody - Images



Western blot analysis of DPP3 expression in 293T cell lysate.