

**Anti-HOOK2 Rabbit Monoclonal Antibody**  
**Catalog # ABO16175****Specification**

---

**Anti-HOOK2 Rabbit Monoclonal Antibody - Product Information**

Application	WB, IHC
Primary Accession	<a href="#">Q96ED9</a>
Host	Rabbit
Isotype	IgG
Reactivity	Human
Clonality	Monoclonal
Format	Liquid

**Description**

Anti-HOOK2 Rabbit Monoclonal Antibody . Tested in WB, IHC applications. This antibody reacts with Human.

**Anti-HOOK2 Rabbit Monoclonal Antibody - Additional Information**

**Gene ID** 29911

**Other Names**

Protein Hook homolog 2, h-hook2, hHK2, HOOK2

**Calculated MW**

85 kDa KDa

**Application Details**

WB 1:500-1:2000<br>IHC 1:50-1:200

**Contents**

Rabbit IgG in phosphate buffered saline, pH 7.4, 150mM NaCl, 0.02% sodium azide and 50% glycerol, 0.4-0.5mg/ml BSA.

**Immunogen**

A synthesized peptide derived from human HOOK2

**Purification**

Affinity-chromatography

Storage

**Store at -20°C for one year. For short term storage and frequent use, store at 4°C for up to one month. Avoid repeated freeze-thaw cycles.**

**Anti-HOOK2 Rabbit Monoclonal Antibody - Protein Information**

**Name** HOOK2

### Function

Component of the FTS/Hook/FHIP complex (FHF complex). The FHF complex may function to promote vesicle trafficking and/or fusion via the homotypic vesicular protein sorting complex (the HOPS complex). Contributes to the establishment and maintenance of centrosome function. May function in the positioning or formation of aggresomes, which are pericentriolar accumulations of misfolded proteins, proteasomes and chaperones. FHF complex promotes the distribution of AP-4 complex to the perinuclear area of the cell (PubMed:<a href="http://www.uniprot.org/citations/32073997" target="\_blank">32073997</a>).

### Cellular Location

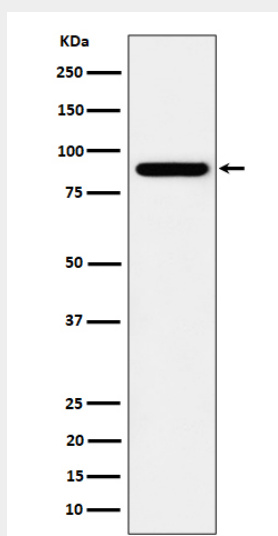
Cytoplasm, cytoskeleton, microtubule organizing center, centrosome. Cytoplasm. Cytoplasm, cytoskeleton {ECO:0000250|UniProtKB:Q7TMK6}. Golgi apparatus, trans-Golgi network. Note=Colocalizes with aggresomes, which are aggregates of misfolded proteins, at the centrosome (PubMed:17540036). Also localizes to punctate cytoplasmic foci which do not appear to overlap with early or late endosomes, the endoplasmic reticulum, multivesicular bodies (MVBs), lysosome, or mitochondria (PubMed:17540036, PubMed:32073997). Often found in close association with microtubules (PubMed:17540036). Localizes to the manchette in elongating spermatids (By similarity). {ECO:0000250|UniProtKB:Q7TMK6, ECO:0000269|PubMed:17540036, ECO:0000269|PubMed:32073997}

### Anti-HOOK2 Rabbit Monoclonal Antibody - Protocols

Provided below are standard protocols that you may find useful for product applications.

- [Western Blot](#)
- [Blocking Peptides](#)
- [Dot Blot](#)
- [Immunohistochemistry](#)
- [Immunofluorescence](#)
- [Immunoprecipitation](#)
- [Flow Cytometry](#)
- [Cell Culture](#)

### Anti-HOOK2 Rabbit Monoclonal Antibody - Images



Western blot analysis of HOOK2 expression in HeLa cell lysate.