

Anti-RASA1 Rabbit Monoclonal Antibody
Catalog # ABO16163

Specification

Anti-RASA1 Rabbit Monoclonal Antibody - Product Information

Application	WB, IHC
Primary Accession	P20936
Host	Rabbit
Isotype	IgG
Reactivity	Rat, Human
Clonality	Monoclonal
Format	Liquid

Description

Anti-RASA1 Rabbit Monoclonal Antibody . Tested in WB, IHC applications. This antibody reacts with Human, Rat.

Anti-RASA1 Rabbit Monoclonal Antibody - Additional Information

Gene ID 5921

Other Names

Ras GTPase-activating protein 1, GAP, GTPase-activating protein, RasGAP, Ras p21 protein activator, p120GAP, RASA1, GAP, RASA

Calculated MW

140 kDa KDa

Application Details

WB 1:500-1:2000
IHC 1:50-1:200

Contents

Rabbit IgG in phosphate buffered saline, pH 7.4, 150mM NaCl, 0.02% sodium azide and 50% glycerol, 0.4-0.5mg/ml BSA.

Immunogen

A synthesized peptide derived from human RASA1

Purification

Affinity-chromatography

Storage

Store at -20°C for one year. For short term storage and frequent use, store at 4°C for up to one month. Avoid repeated freeze-thaw cycles.

Anti-RASA1 Rabbit Monoclonal Antibody - Protein Information

Name RASA1

Synonyms GAP, RASA

Function

Inhibitory regulator of the Ras-cyclic AMP pathway. Stimulates the GTPase of normal but not oncogenic Ras p21; this stimulation may be further increased in the presence of NCK1.

Cellular Location

Cytoplasm.

Tissue Location

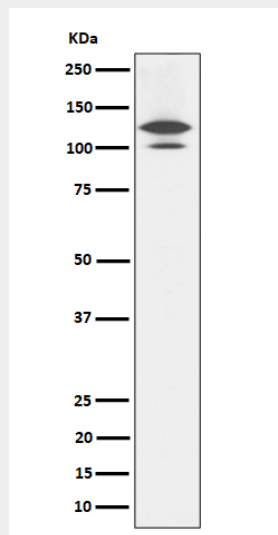
In placental villi, detected only in the trophoblast layer (cytotrophoblast and syncytiotrophoblast). Not detected in stromal, endothelial or Hofbauer cells (at protein level)

Anti-RASA1 Rabbit Monoclonal Antibody - Protocols

Provided below are standard protocols that you may find useful for product applications.

- [Western Blot](#)
- [Blocking Peptides](#)
- [Dot Blot](#)
- [Immunohistochemistry](#)
- [Immunofluorescence](#)
- [Immunoprecipitation](#)
- [Flow Cytometry](#)
- [Cell Culture](#)

Anti-RASA1 Rabbit Monoclonal Antibody - Images



Western blot analysis of RASA1 expression in Rat brain cell lysate.